

UNIVERSITY OF KENTUCKY BOARD OF TRUSTEES

Doug Michael, University Senate Council Chair



ANNUAL UNIVERSITY SENATE EVALUATION OF THE PRESIDENT

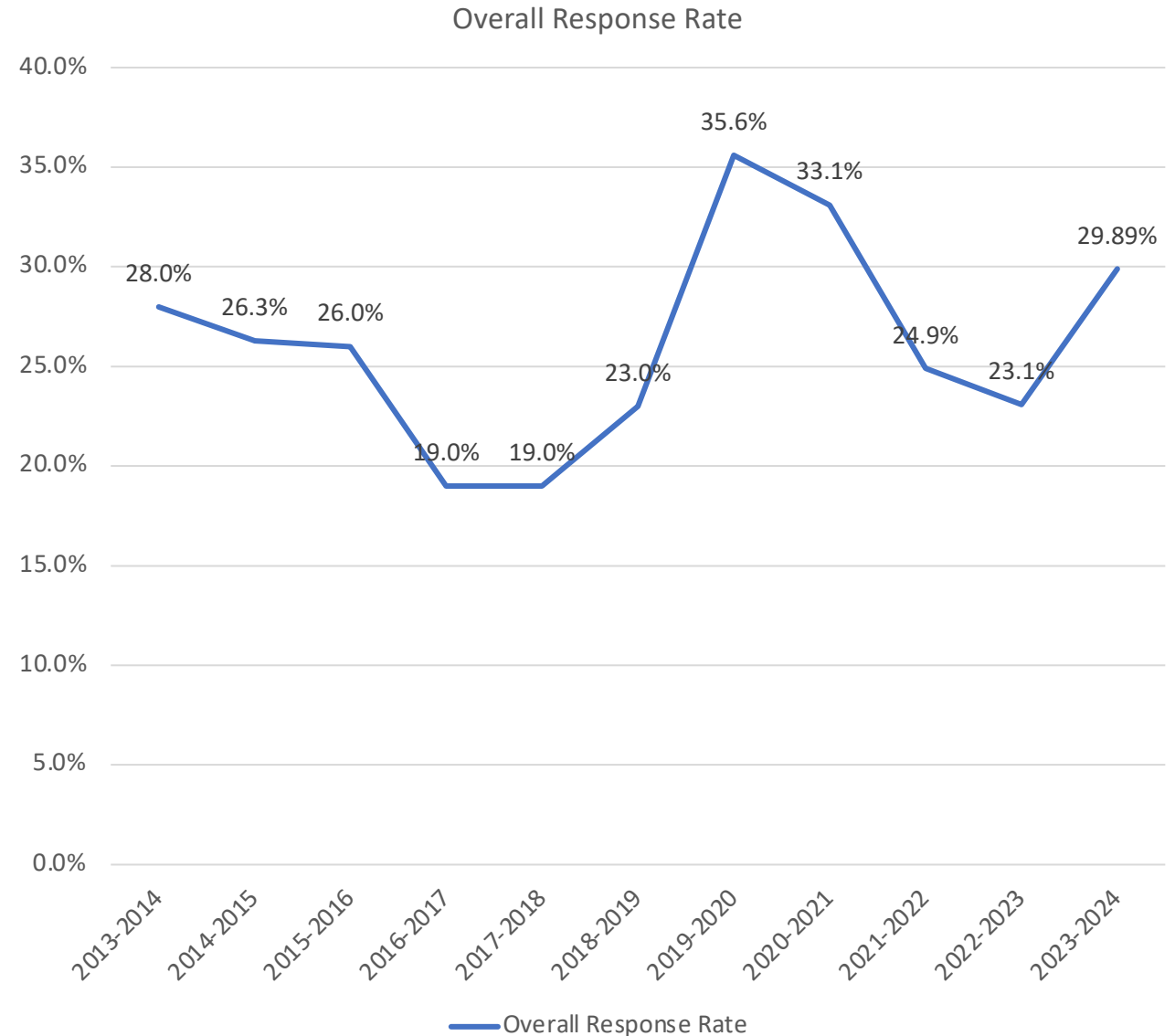
ANNUAL SENATE EVALUATION OF THE PRESIDENT

Background

The Senate Council assisted in the annual evaluation of President Capilouto by surveying all full-time faculty from April 30, 2023, to May 17, 2023.

Of the 2,907 faculty members surveyed, 869 responses were received yielding a **29.89%** response rate.

The results are summarized and compared with the results from the 2014-15, 2015-16, 2016-17, 2017-18, 2018-19, 2019-20, 2020-21, 2021-22, and 2022-2023 surveys in the slides that follow.



ANNUAL SENATE EVALUATION OF THE PRESIDENT

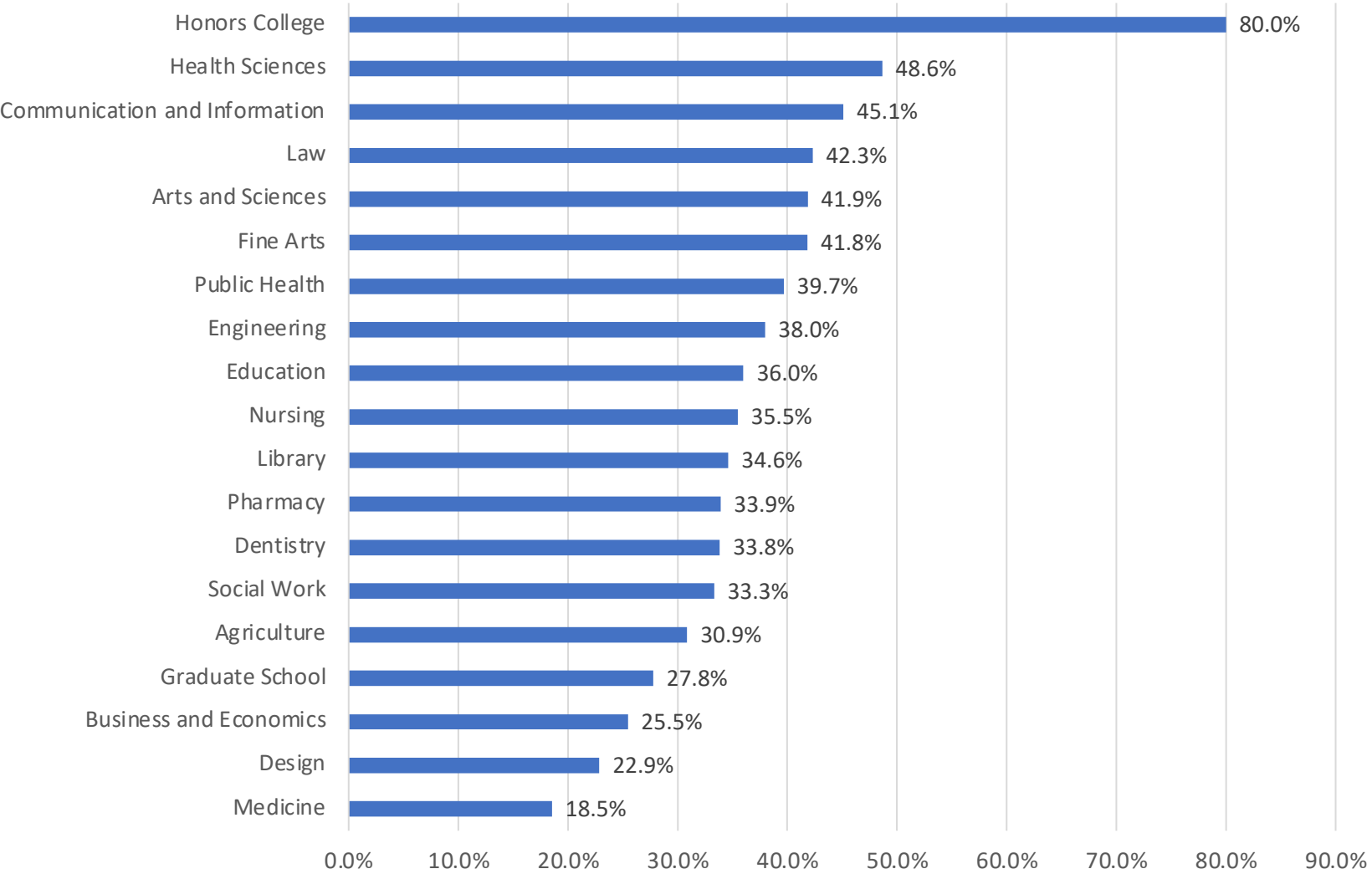
College	Invited	Responded	Response Rate
Agriculture	243	75	30.86%
Arts and Sciences	449	188	41.87%
Business and Economics	106	27	25.47%
Communication and Information	82	37	45.12%
Dentistry	65	22	33.85%
Design	35	8	22.86%
Education	100	36	36.00%
Engineering	158	60	37.97%
Fine Arts	98	41	41.84%
Graduate School	18	5	27.78%
Health Sciences	74	36	48.65%
Honors College	10	8	80.00%
Law	26	11	42.31%
Library	52	18	34.62%
Medicine	1165	216	18.54%
Nursing	62	22	35.48%
Pharmacy	56	19	33.93%
Public Health	63	25	39.68%
Social Work	45	15	33.33%

Response Rate by College

Total Faculty Surveyed	2907
Overall Response Rate	29.89%

ANNUAL SENATE EVALUATION OF THE PRESIDENT

2023-2024 Percent Response Rate by College



**Response
Rate by
College,
*ranked***

Presidential Evaluation About the Results – Response Scale

Respondents ranked the President on a 5-point Likert scale, with an option to not respond.

- 1 = Strongly disagree
- 2 = Disagree
- 3 = Neither agree nor disagree
- 4 = Agree
- 5 = Strongly agree

Responses can be read by moving from left to right.

- On the far left are responses of “1” (“Strongly disagree”)
- On the far right are responses of “5” (“Strongly agree”)

Data Graphs

- For the data presented on the left side of each slide, the Y-axis is the percent of frequency and the X-axis provides the Likert Scale.
- The data presented on the right side of each slide, will illustrate the average Likert scale rating



Annual Senate Council Evaluation of the President

About the Results – Colors

Colors indicate the year of the survey.

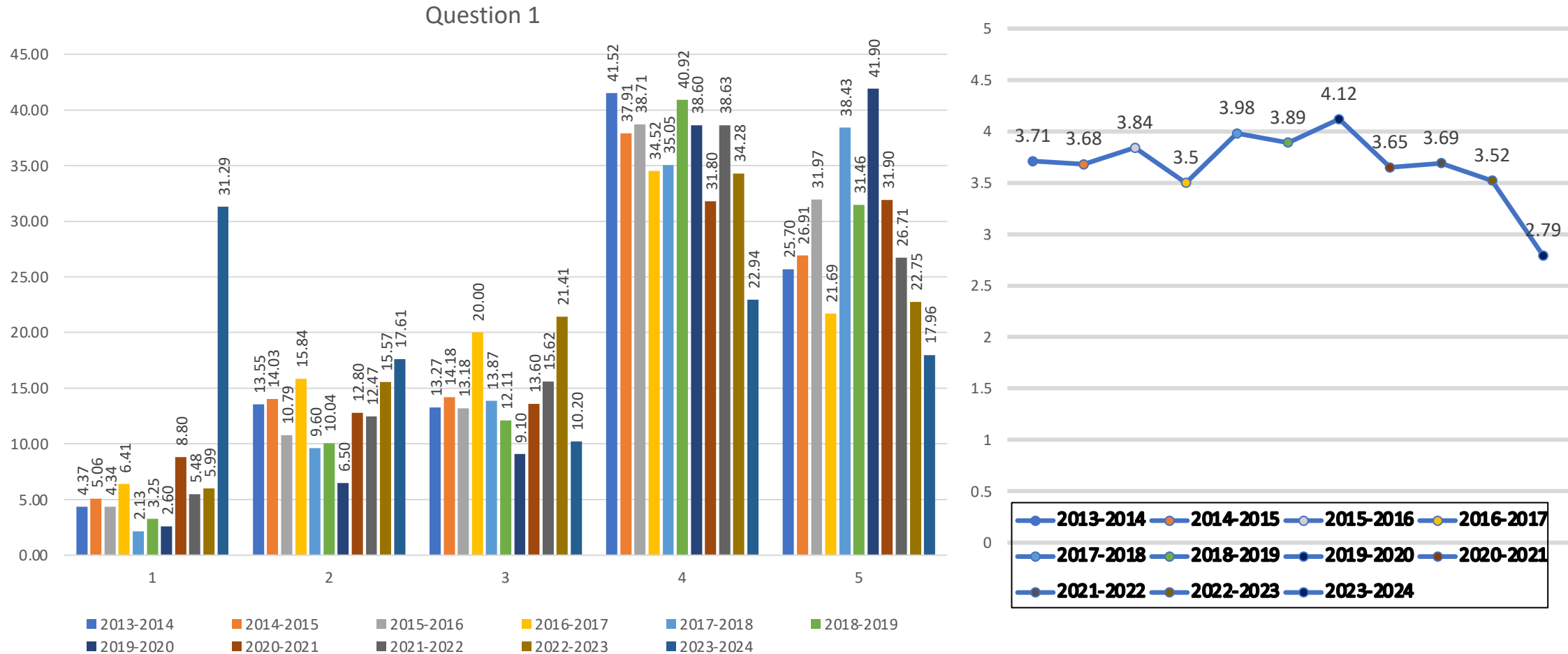
■ 2013-2014 ■ 2014-2015 ■ 2015-2016 ■ 2016-2017 ■ 2017-2018 ■ 2018-2019

■ 2019-2020 ■ 2020-2021 ■ 2021-2022 ■ 2022-2023 ■ 2023-2024

ANNUAL SENATE COUNCIL EVALUATION OF THE PRESIDENT

During the 2023-24 Academic Year, the President Has Been Effective in...

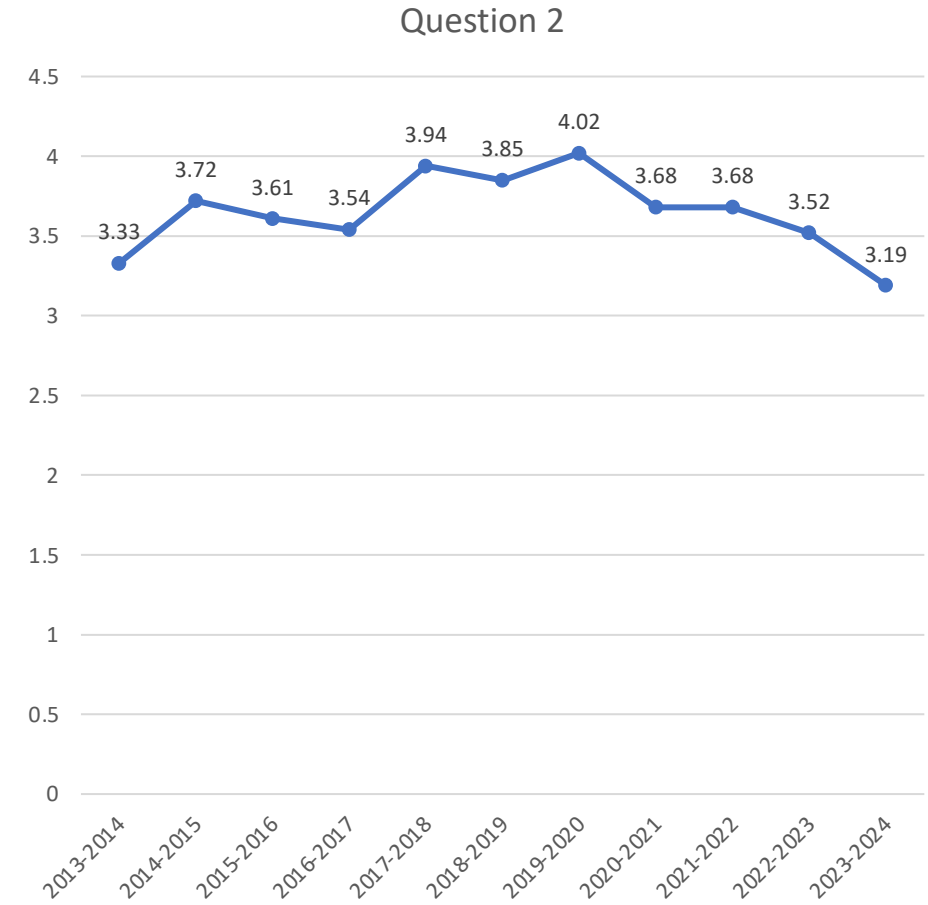
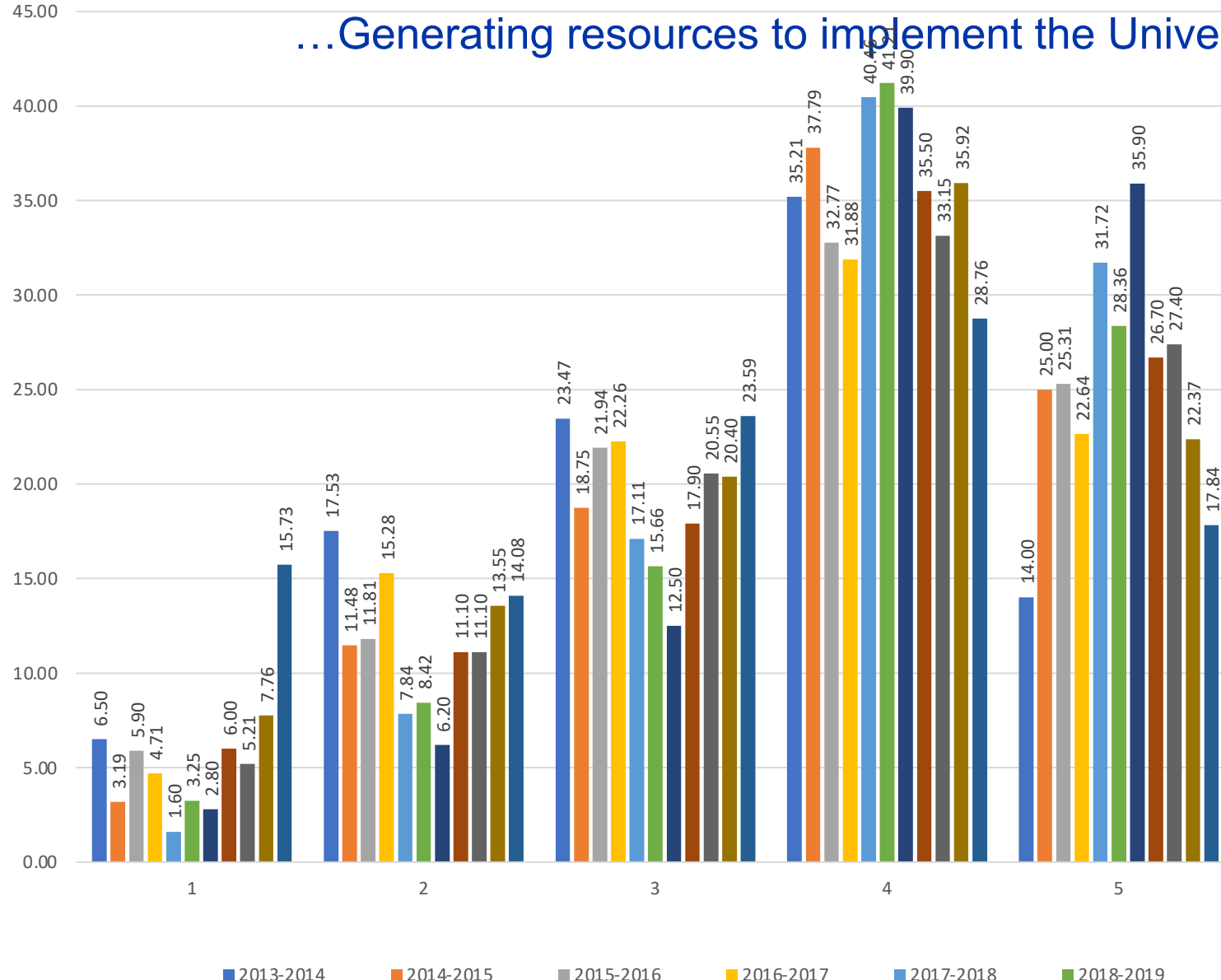
...Communicating his plans for the future of the University



ANNUAL UNIVERSITY SENATE EVALUATION OF THE PRESIDENT

During the 2023-24 Academic Year, the President Has Been Effective in...

...Generating resources to implement the University mission successfully

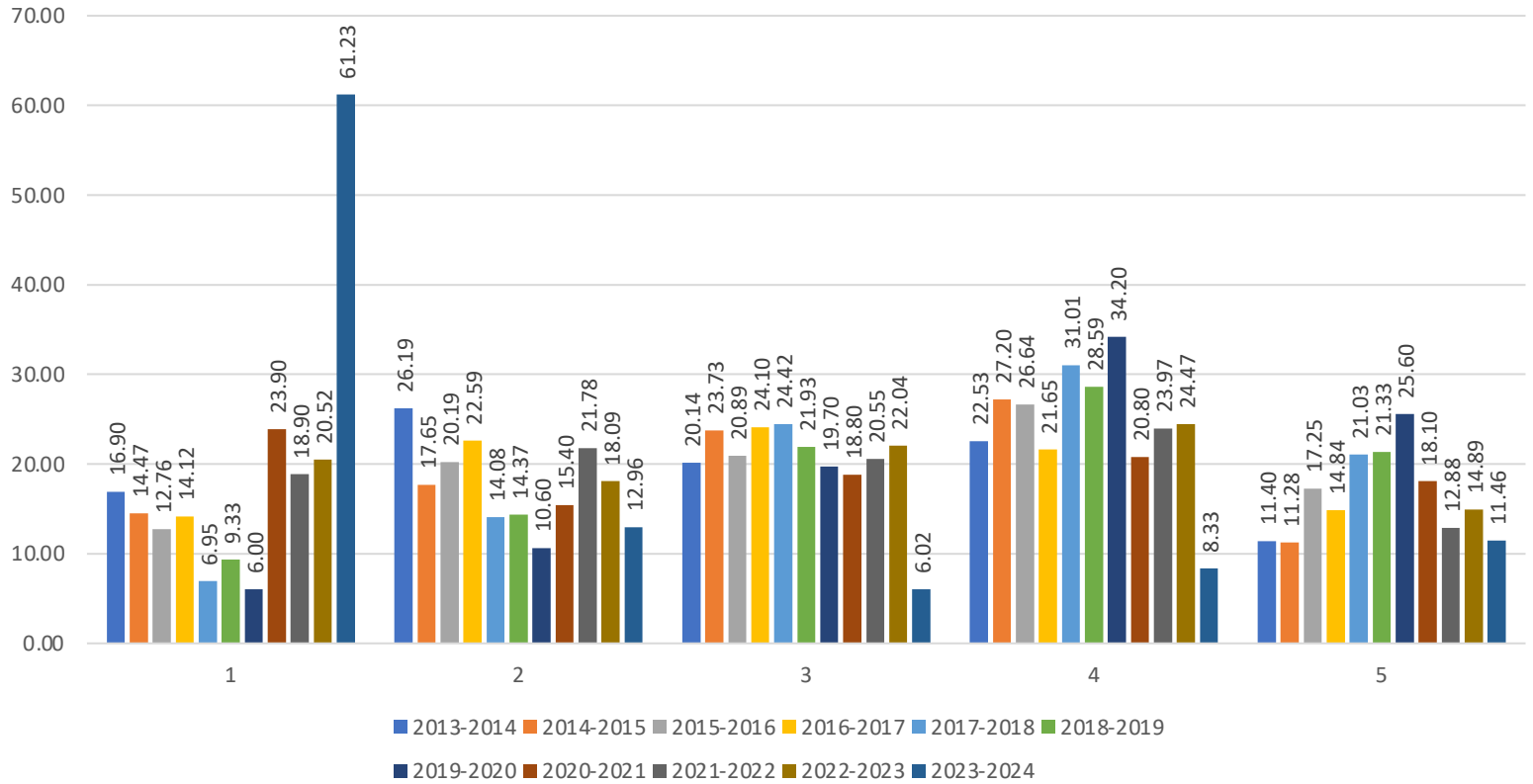


ANNUAL UNIVERSITY SENATE EVALUATION OF THE PRESIDENT

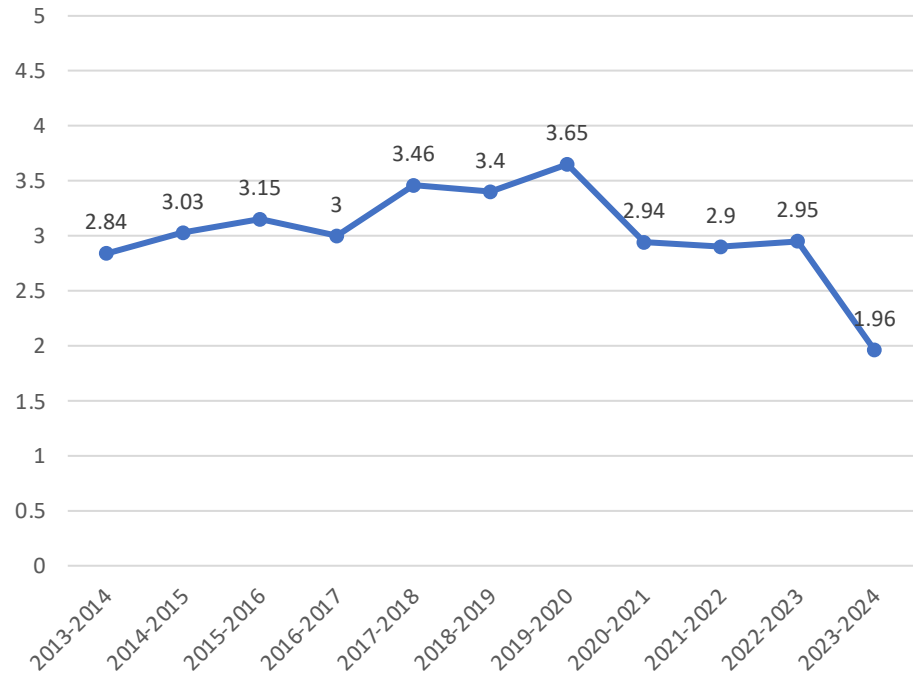
During the 2023-24 Academic Year, the President Has Been Effective in...

...Listening to faculty concerns

Question 3



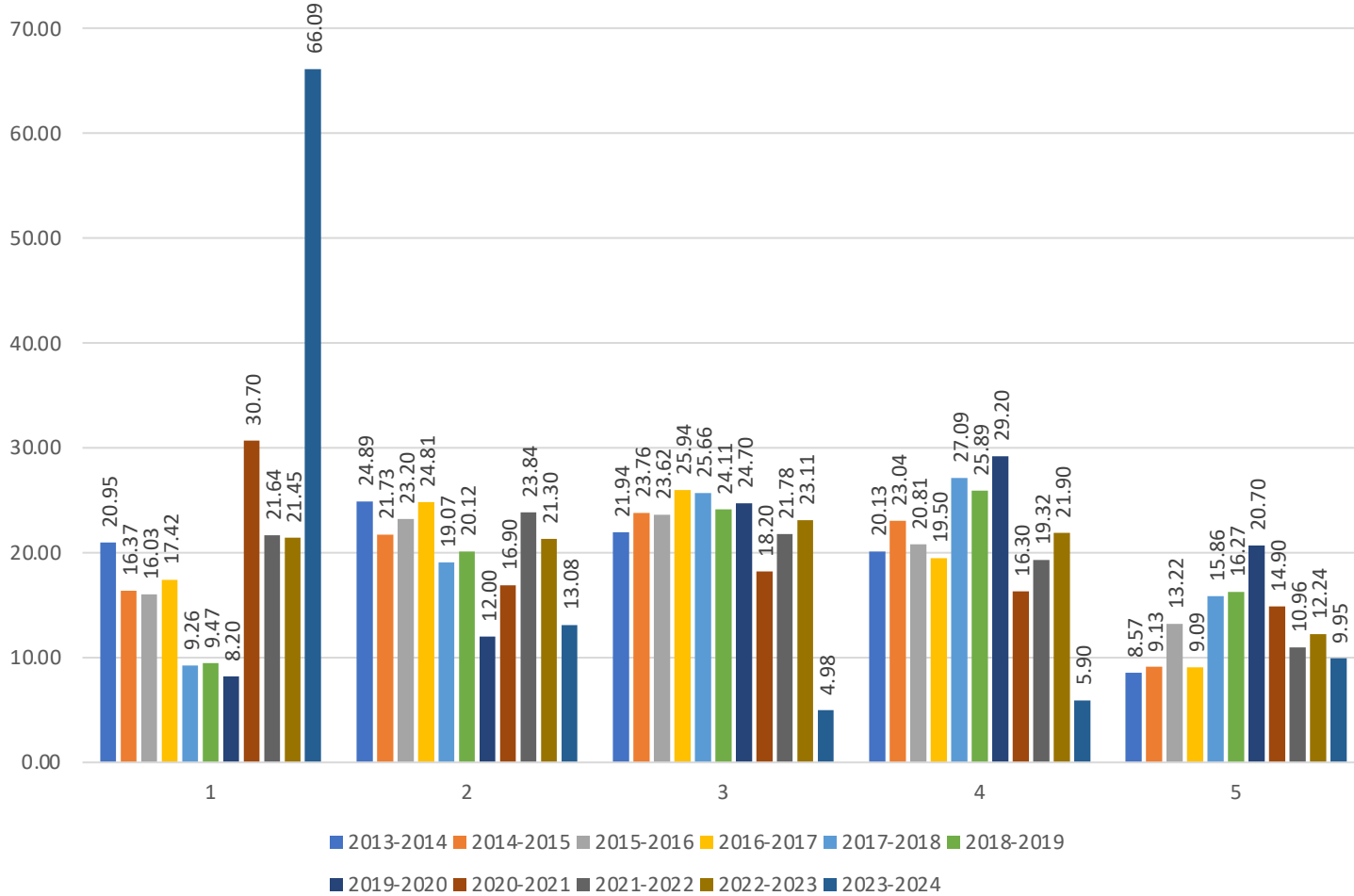
Question 3



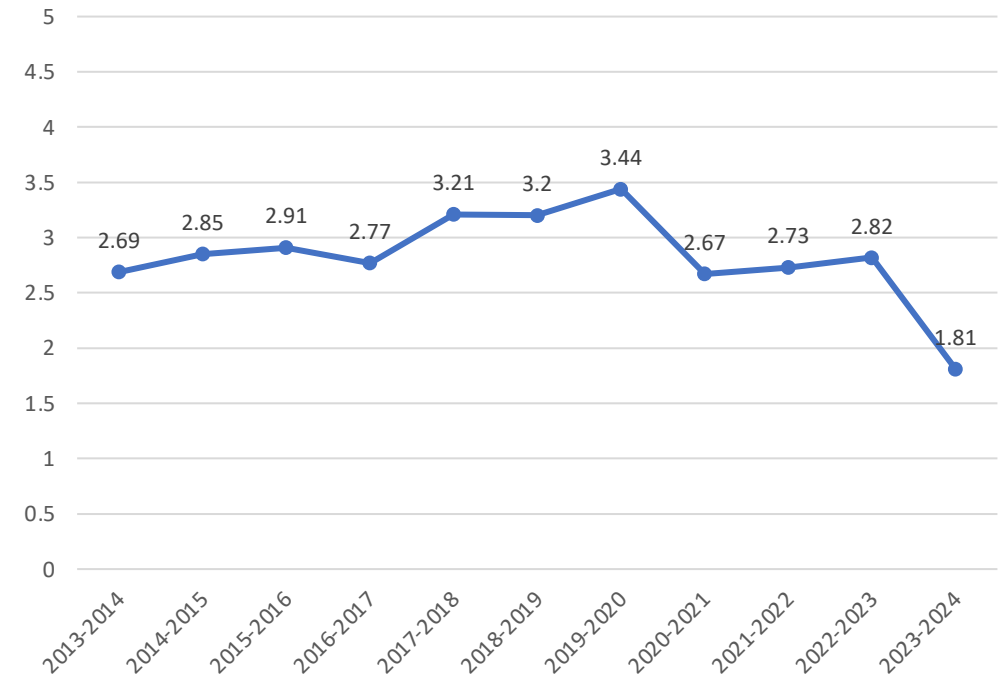
ANNUAL UNIVERSITY SENATE EVALUATION OF THE PRESIDENT

During the 2023-24 Academic Year, the President Has Been Effective in... ...Involving the faculty in decision-making

Question 4



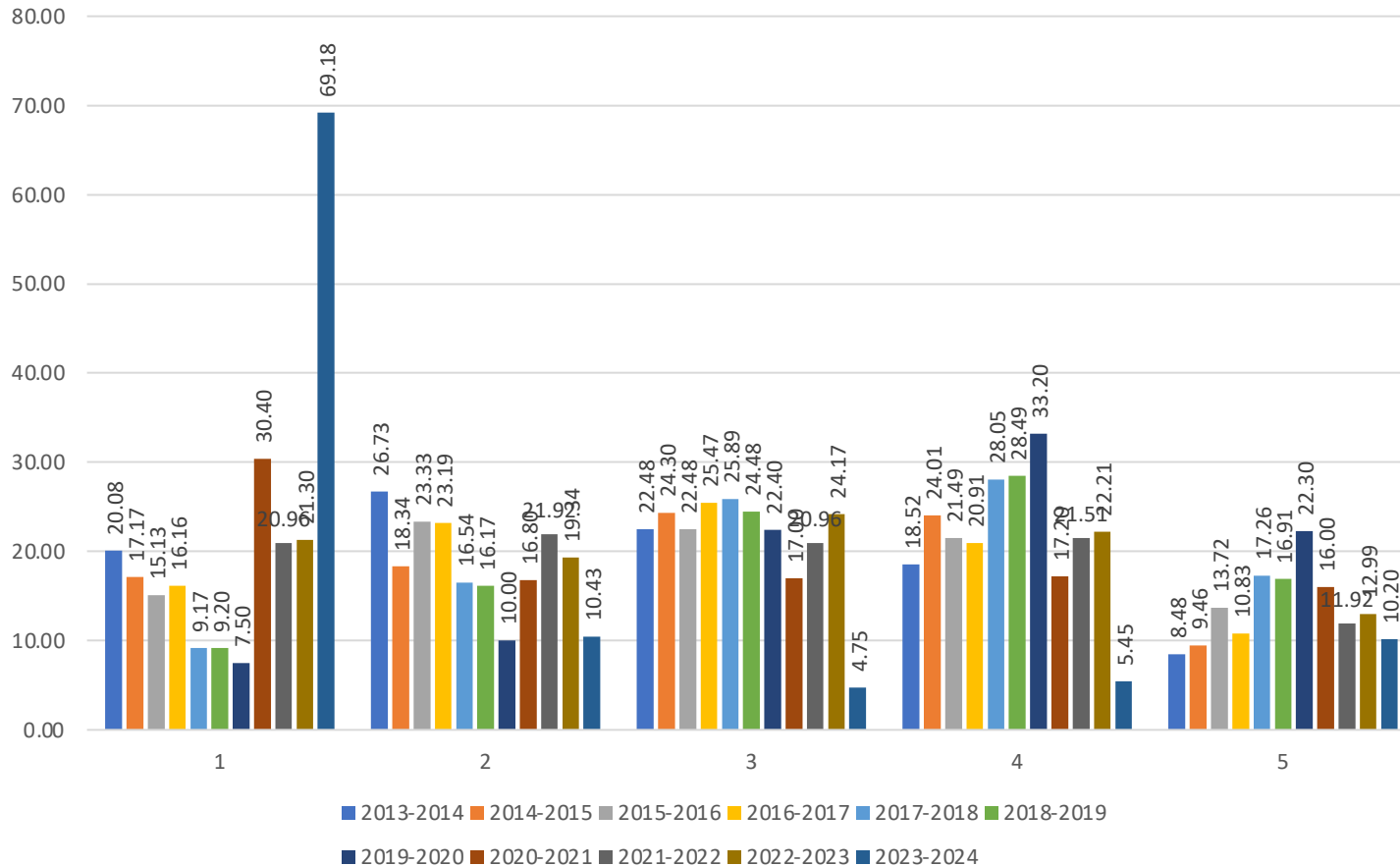
Question 4



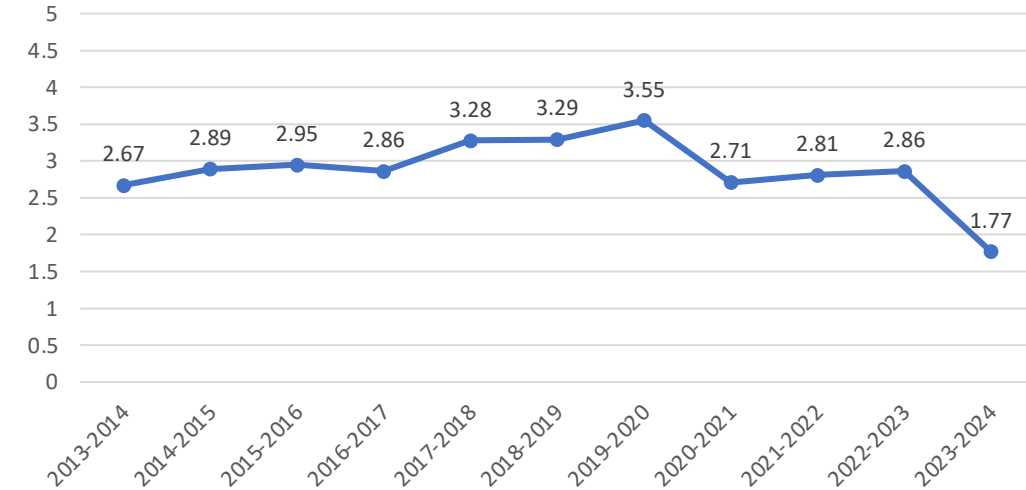
ANNUAL UNIVERSITY SENATE EVALUATION OF THE PRESIDENT

During the 2023-24 Academic Year, the President Has Been Effective in... ...Engaging the faculty in shared governance

Question 5



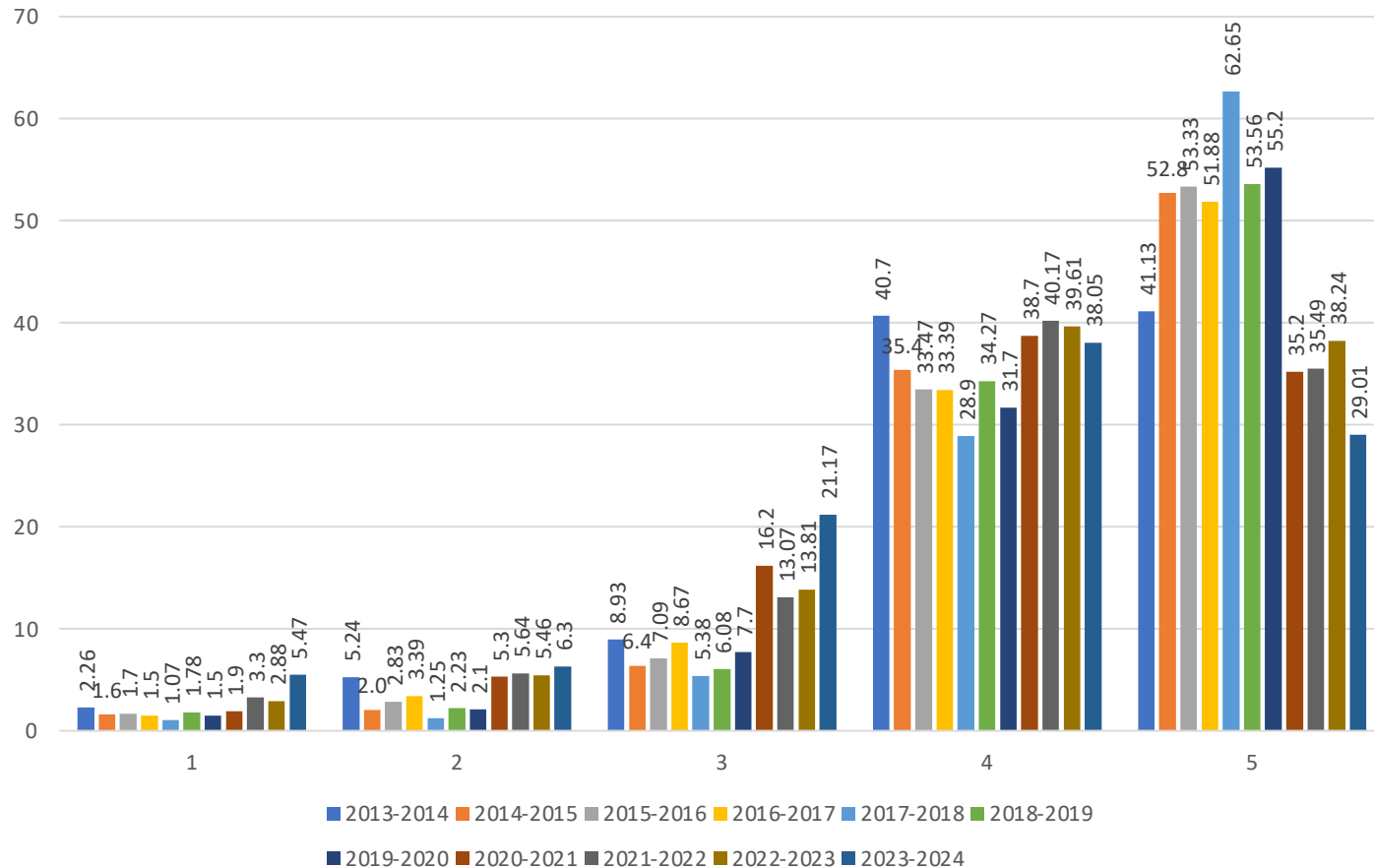
Question 5



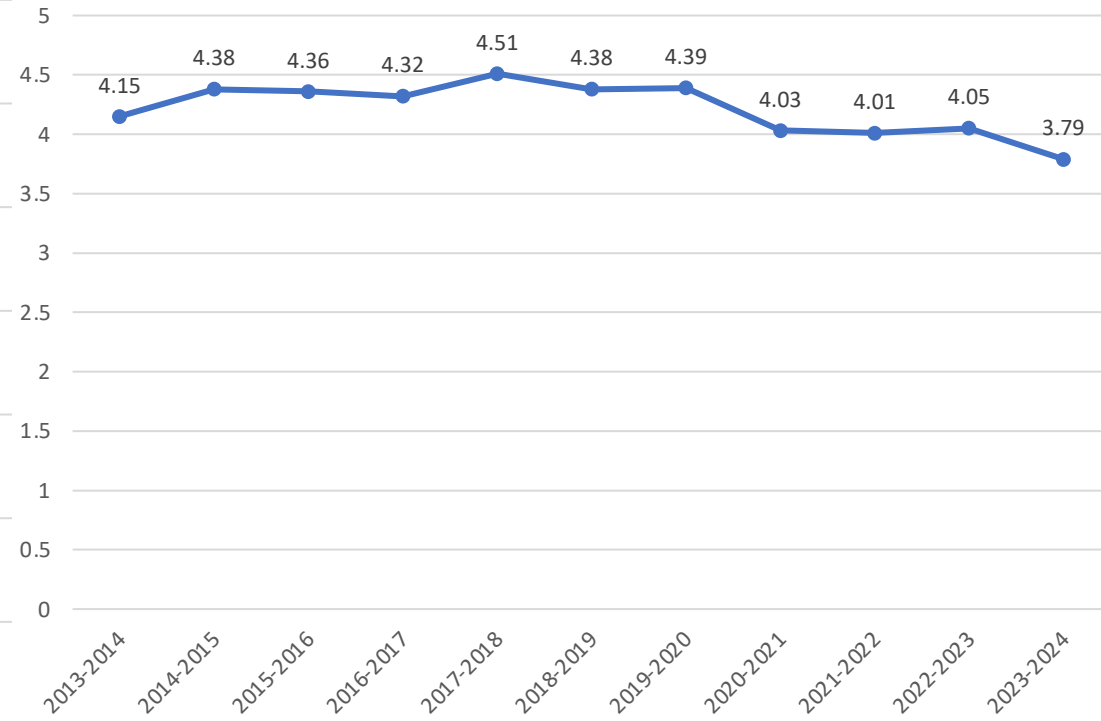
ANNUAL UNIVERSITY SENATE EVALUATION OF THE PRESIDENT

During the 2023-24 Academic Year, the President Has Been Effective in... ...Building campus infrastructure

Question 6



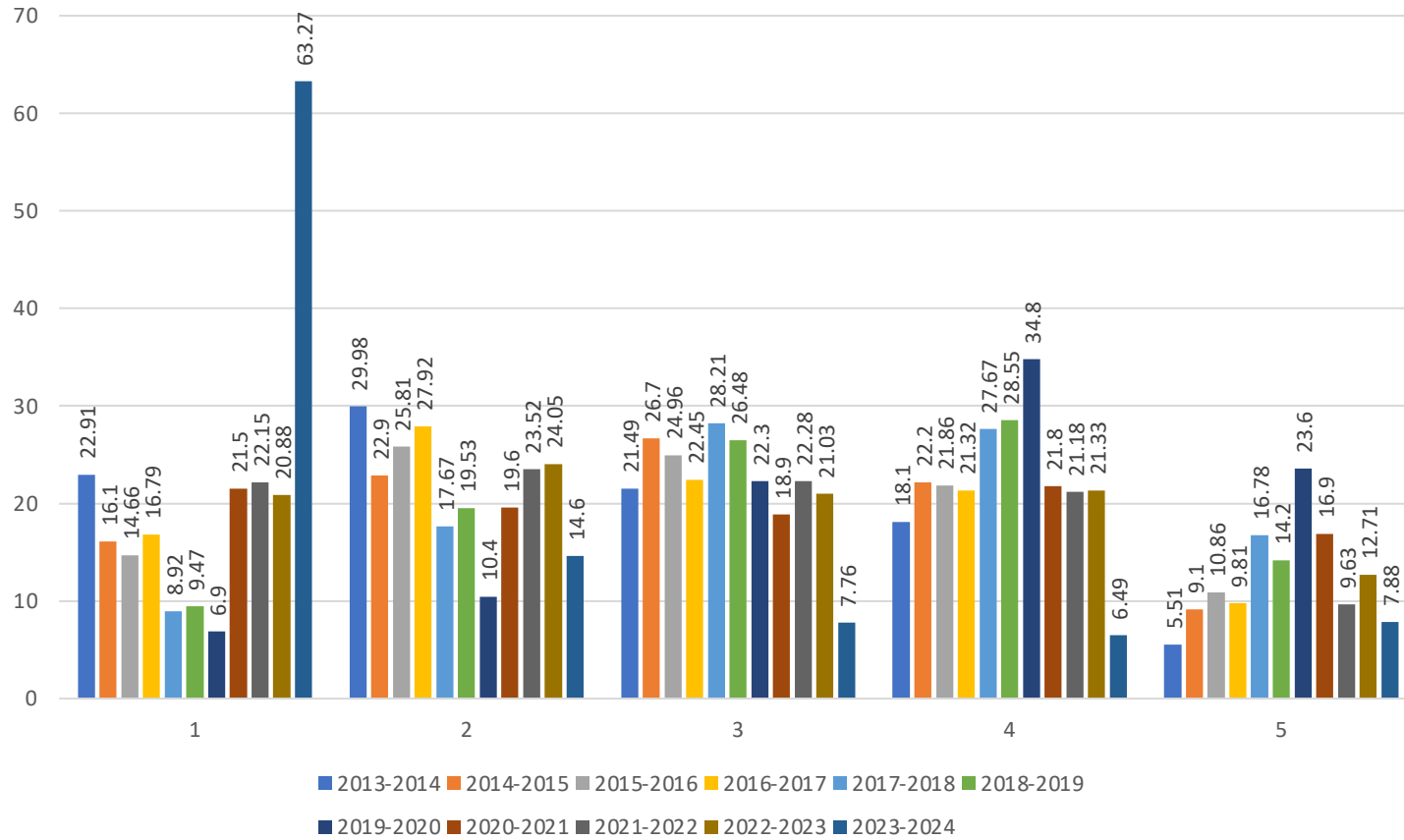
Question 6



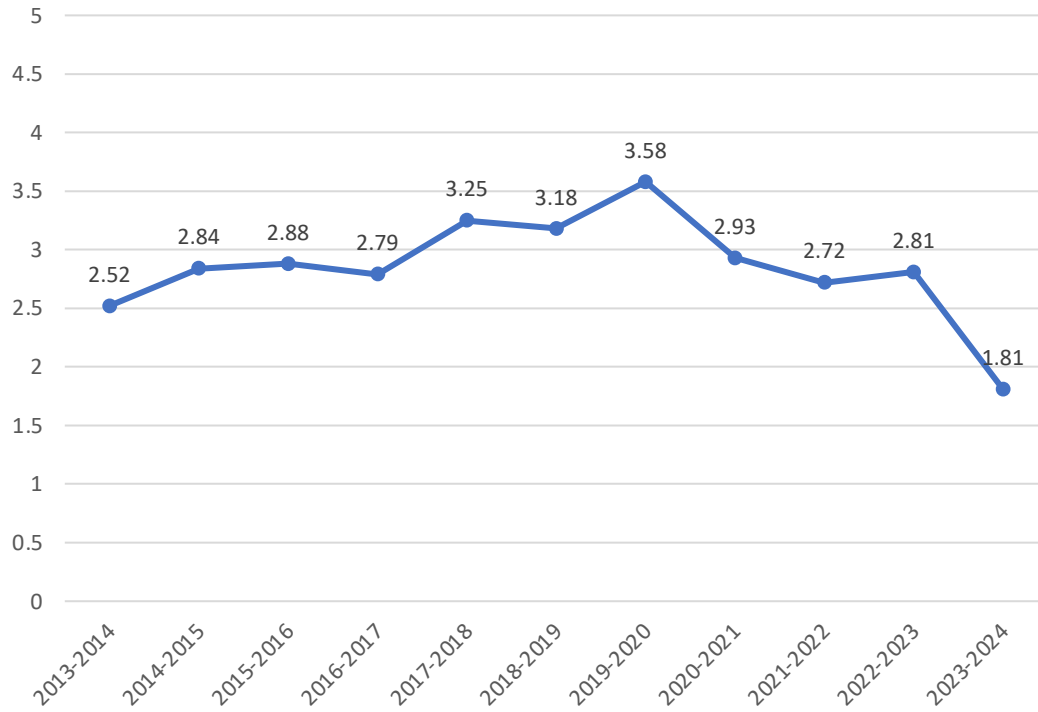
ANNUAL UNIVERSITY SENATE EVALUATION OF THE PRESIDENT

During the 2023-24 Academic Year, the President Has Been Effective in... ...Building faculty morale

Question 7



Question 7

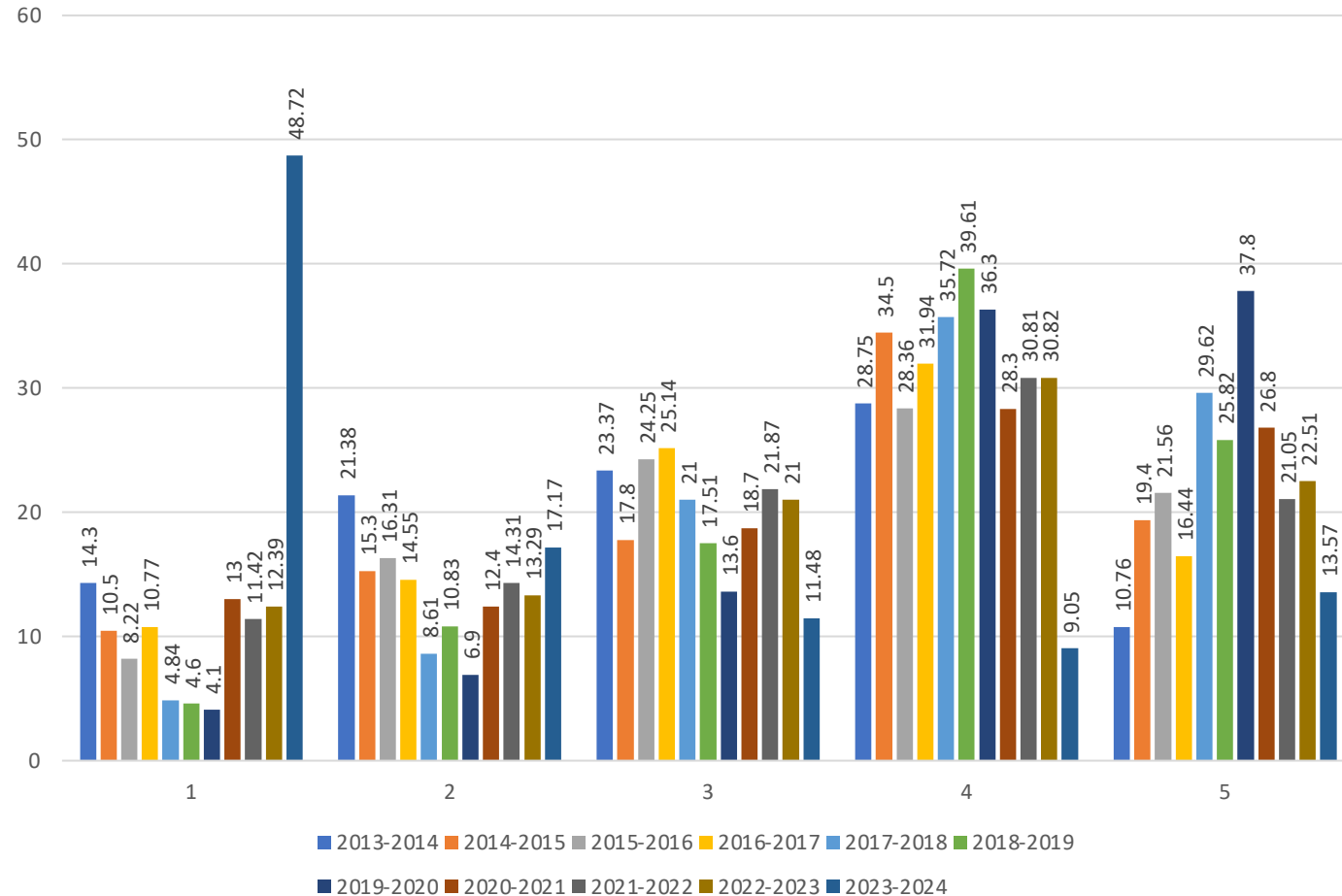


ANNUAL UNIVERSITY SENATE EVALUATION OF THE PRESIDENT

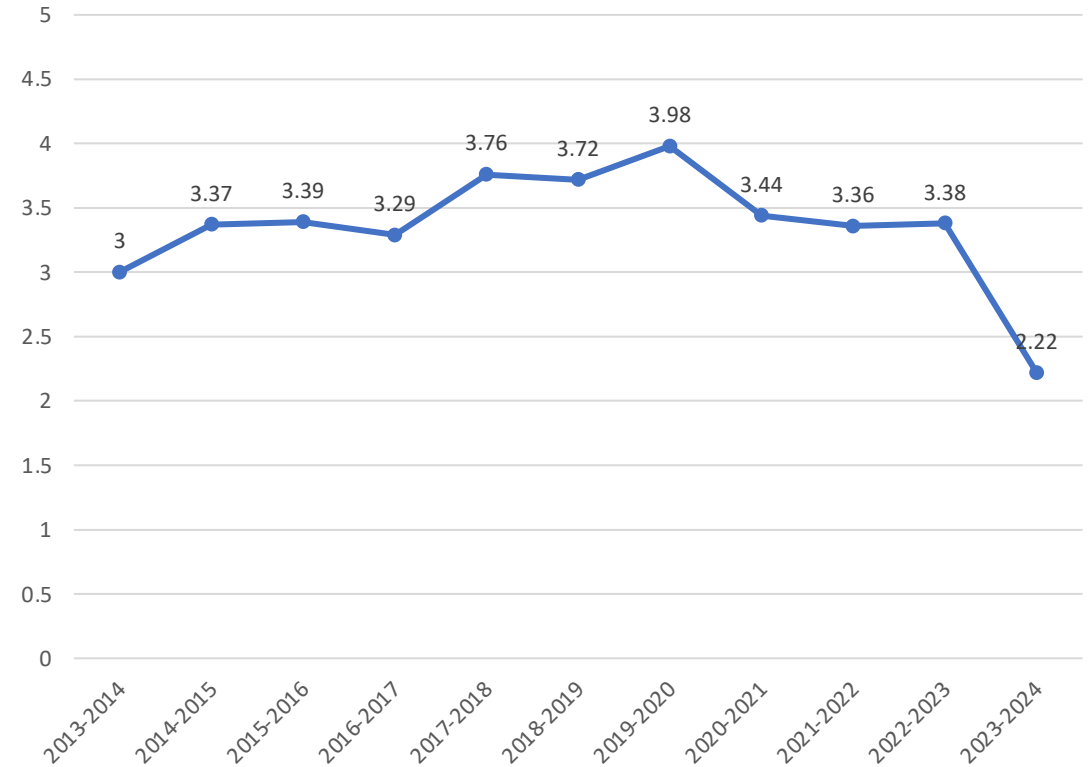
During the 2023-24 Academic Year, the President Has Been Effective in...

...Fostering confidence in the future of UK

Question 8



Question 8

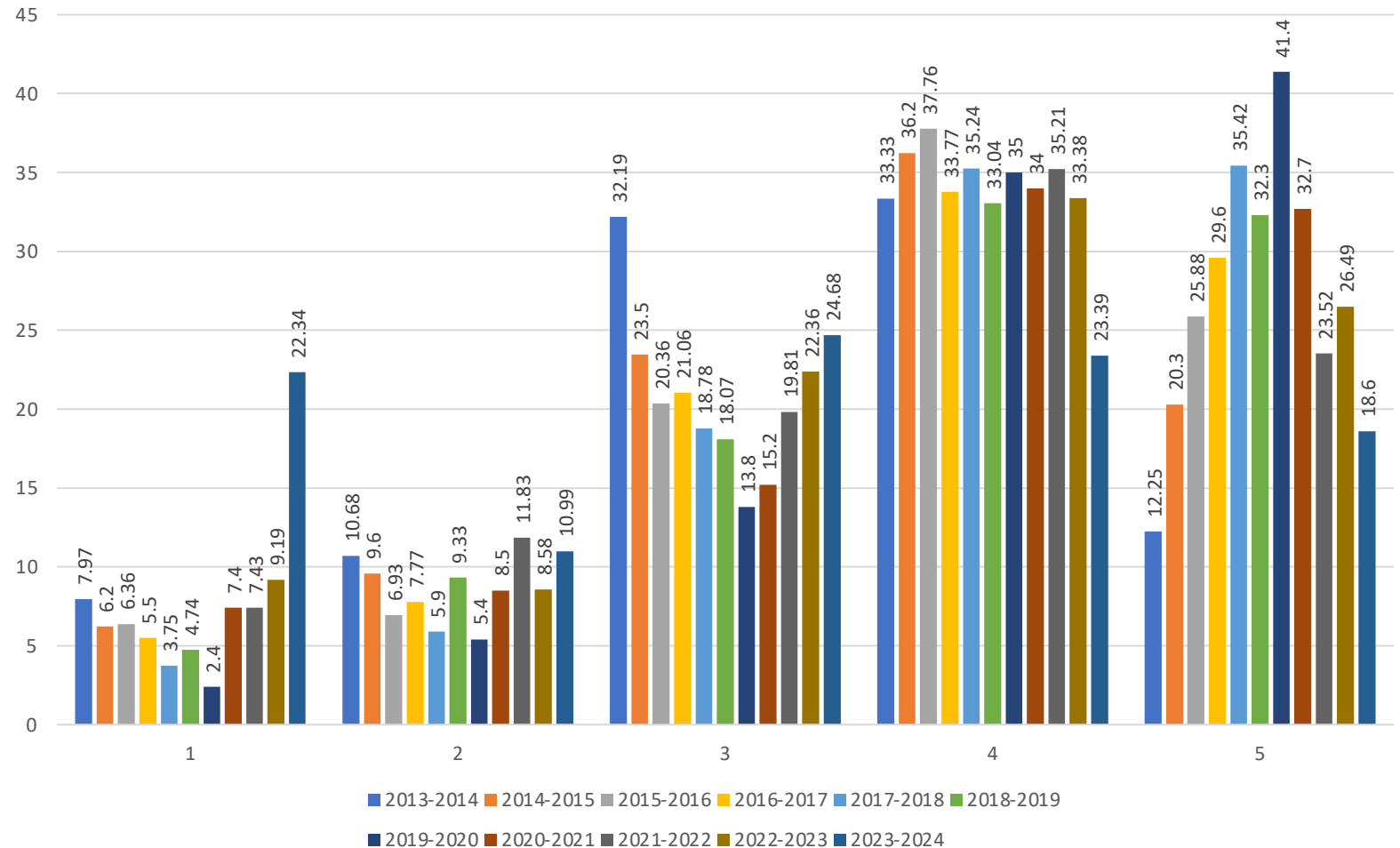


ANNUAL UNIVERSITY SENATE EVALUATION OF THE PRESIDENT

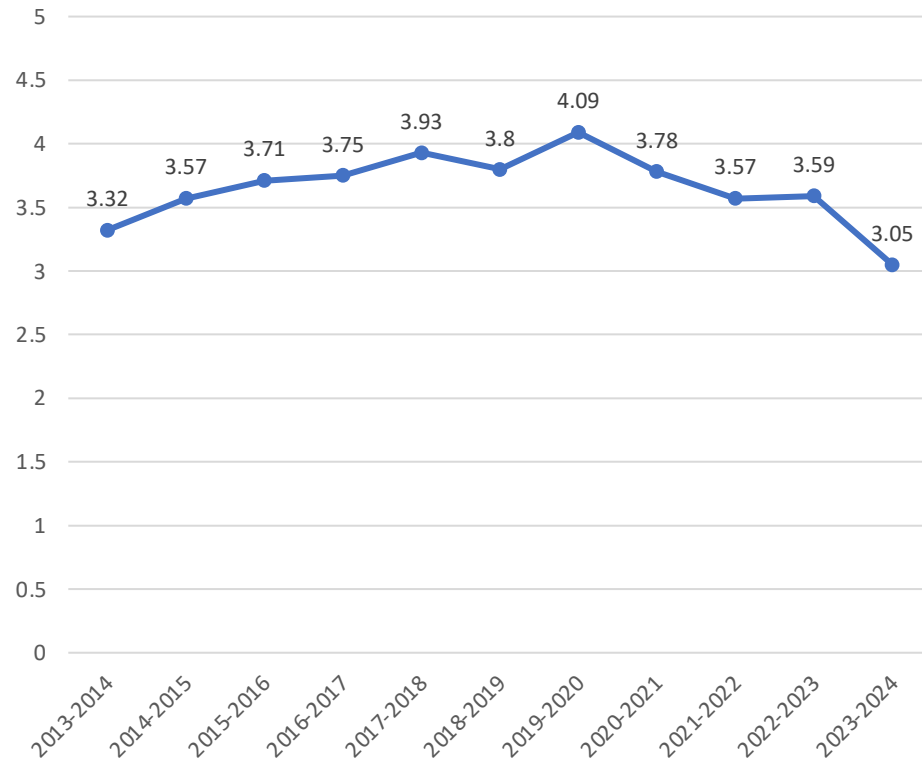
During the 2023-24 Academic Year, the President Has Been Effective in...

...Fostering a campus environment that is diverse and inclusive

Question 9



Question 9

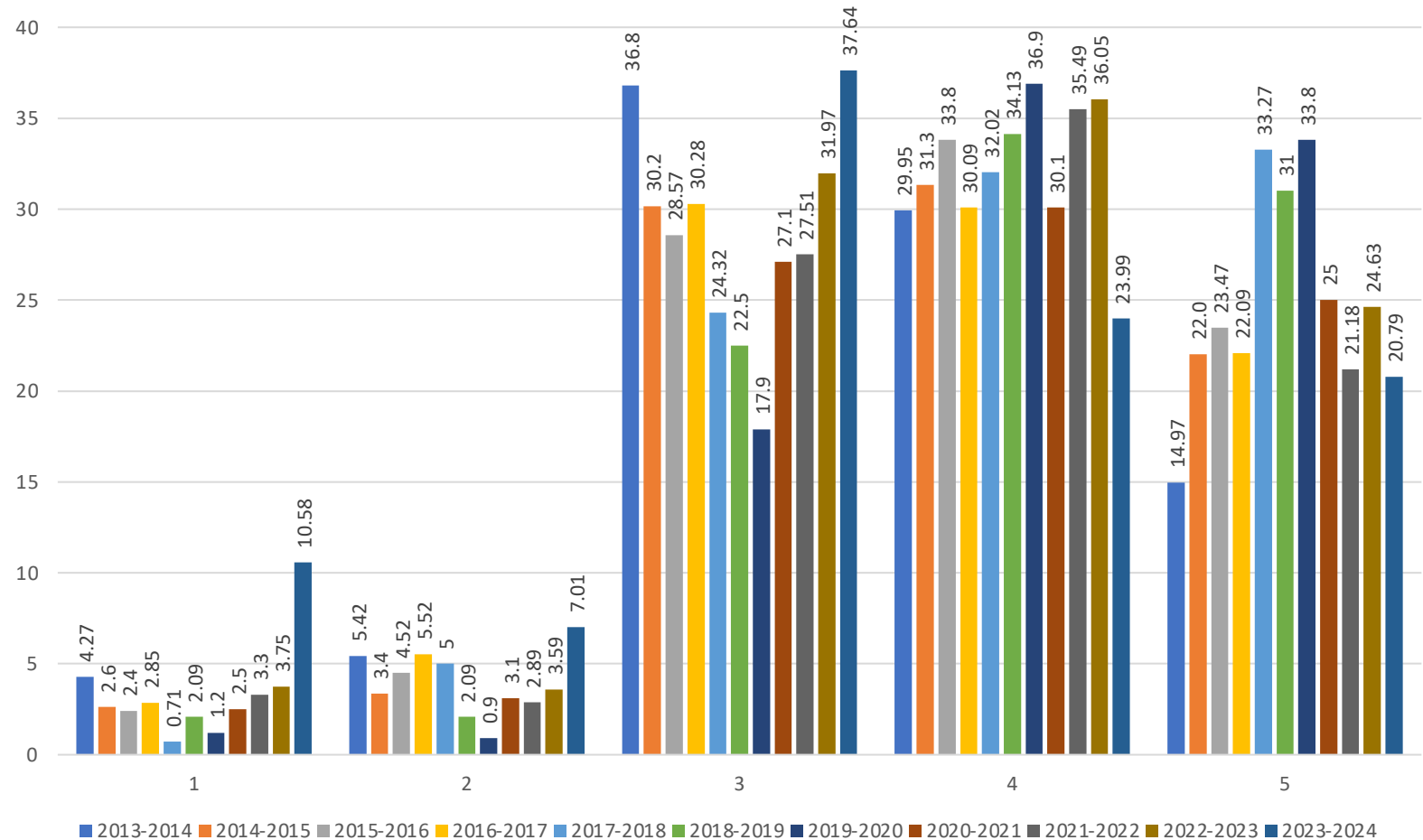


ANNUAL UNIVERSITY SENATE EVALUATION OF THE PRESIDENT

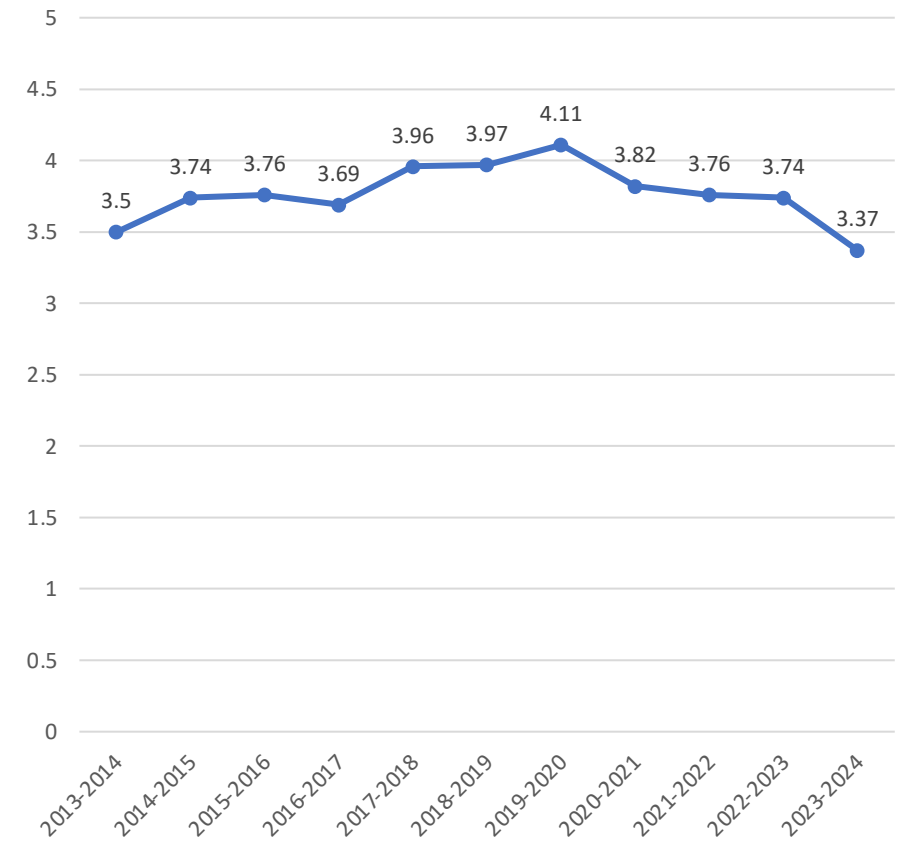
During the 2023-24 Academic Year, the President Has Been Effective in...

...Maintaining productive relationships with external constituencies

Question 10



Question 10

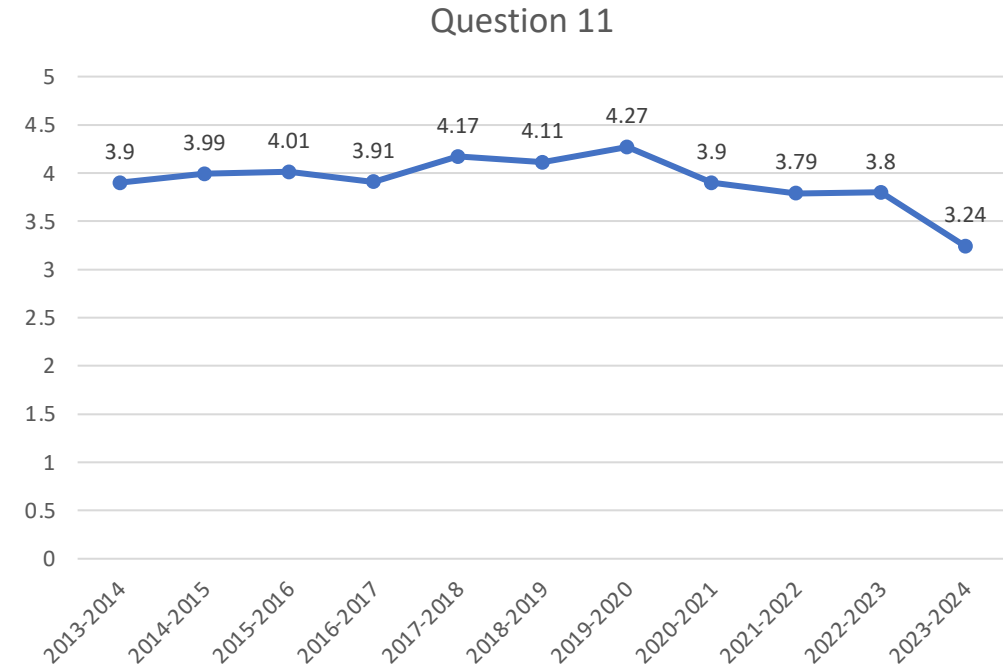
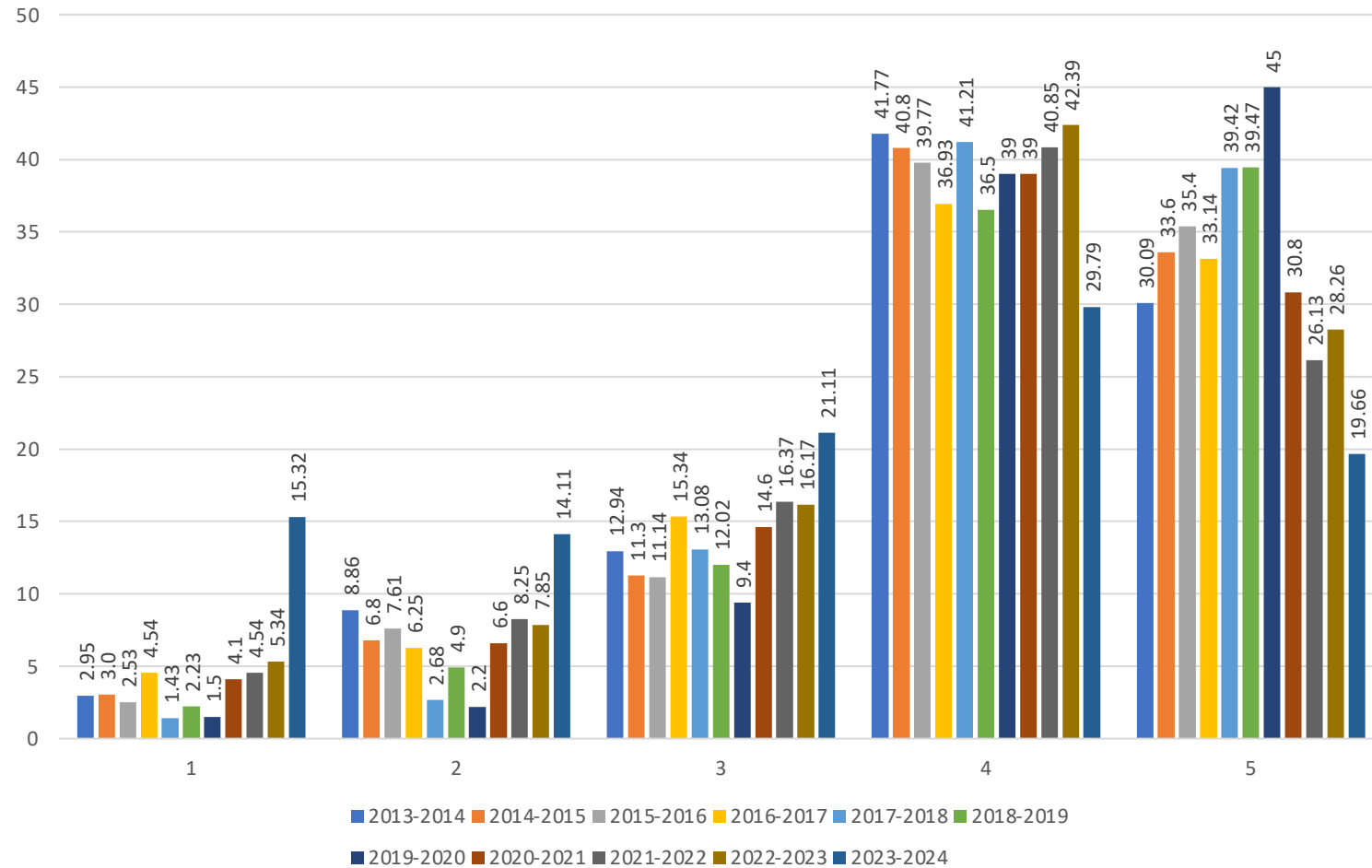


ANNUAL UNIVERSITY SENATE EVALUATION OF THE PRESIDENT

During the 2023-24 Academic Year, the President Has Been Effective in...

...Supporting undergraduate education

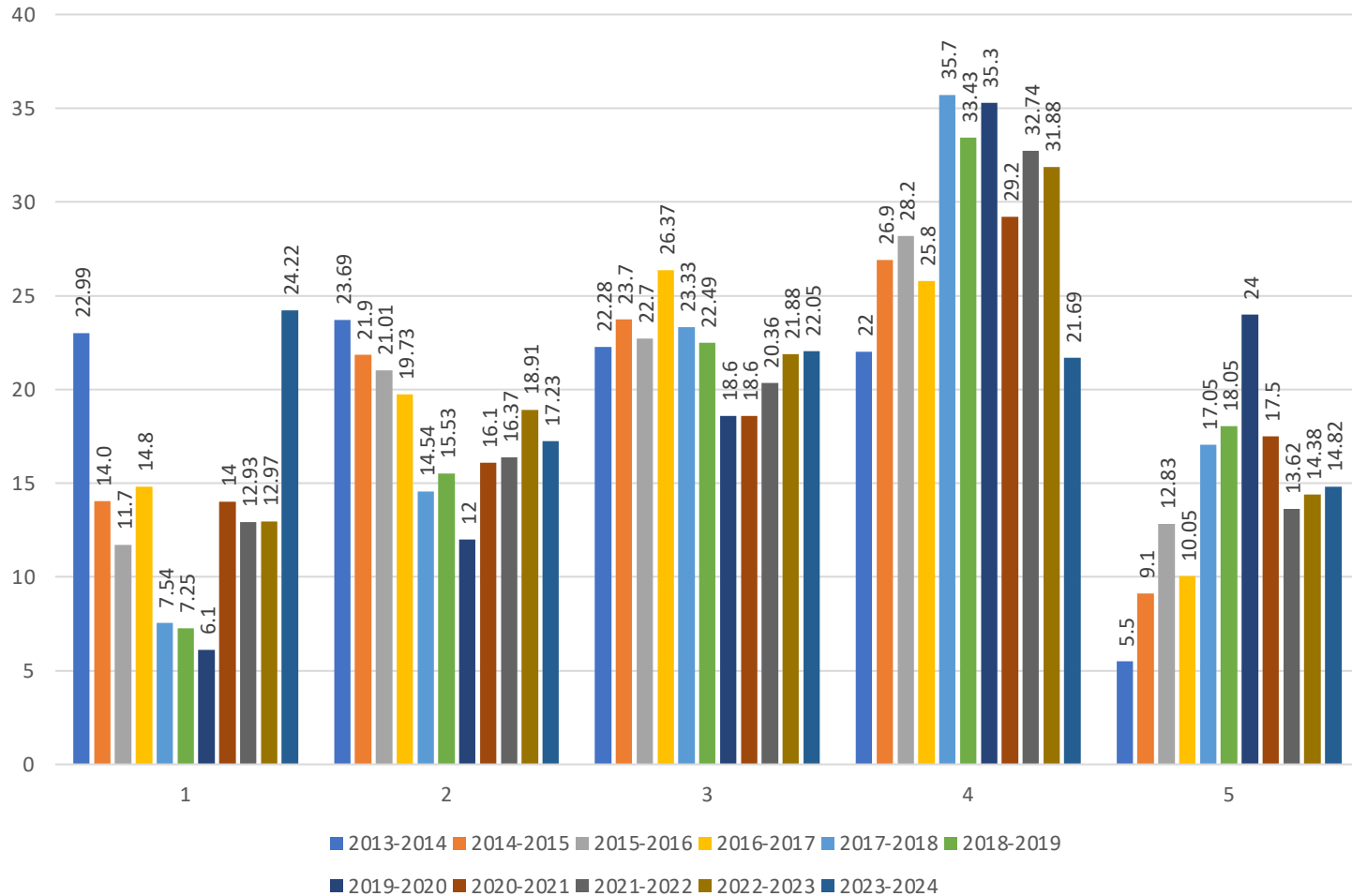
Question 11



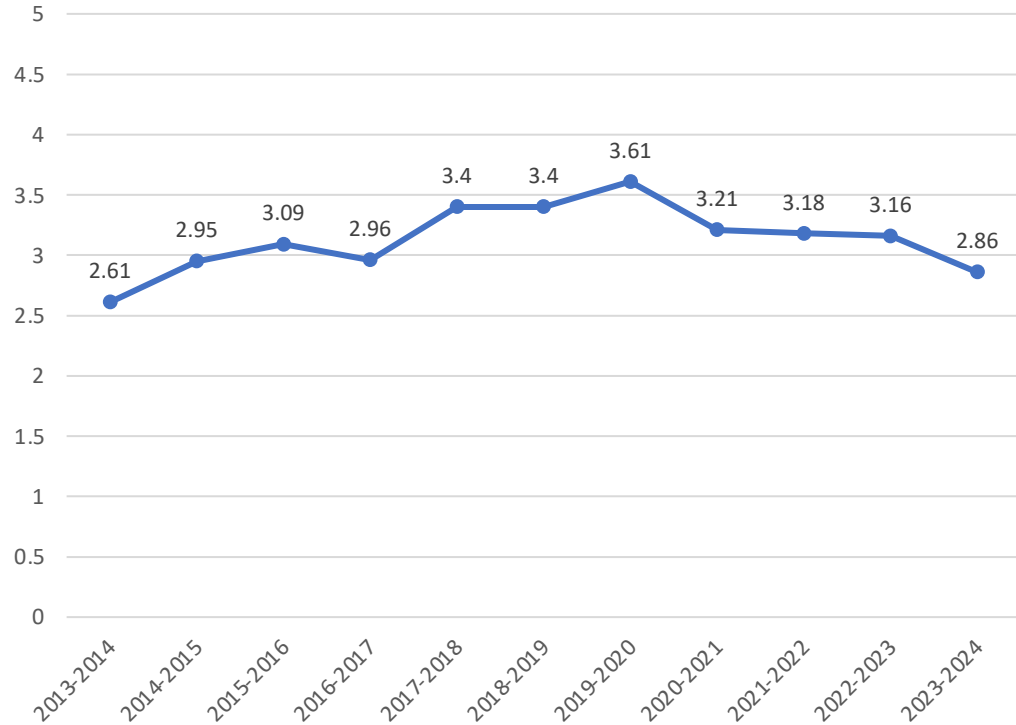
ANNUAL UNIVERSITY SENATE EVALUATION OF THE PRESIDENT

During the 2023-24 Academic Year, the President Has Been Effective in... ...Supporting graduate education

Question 12



Question 12

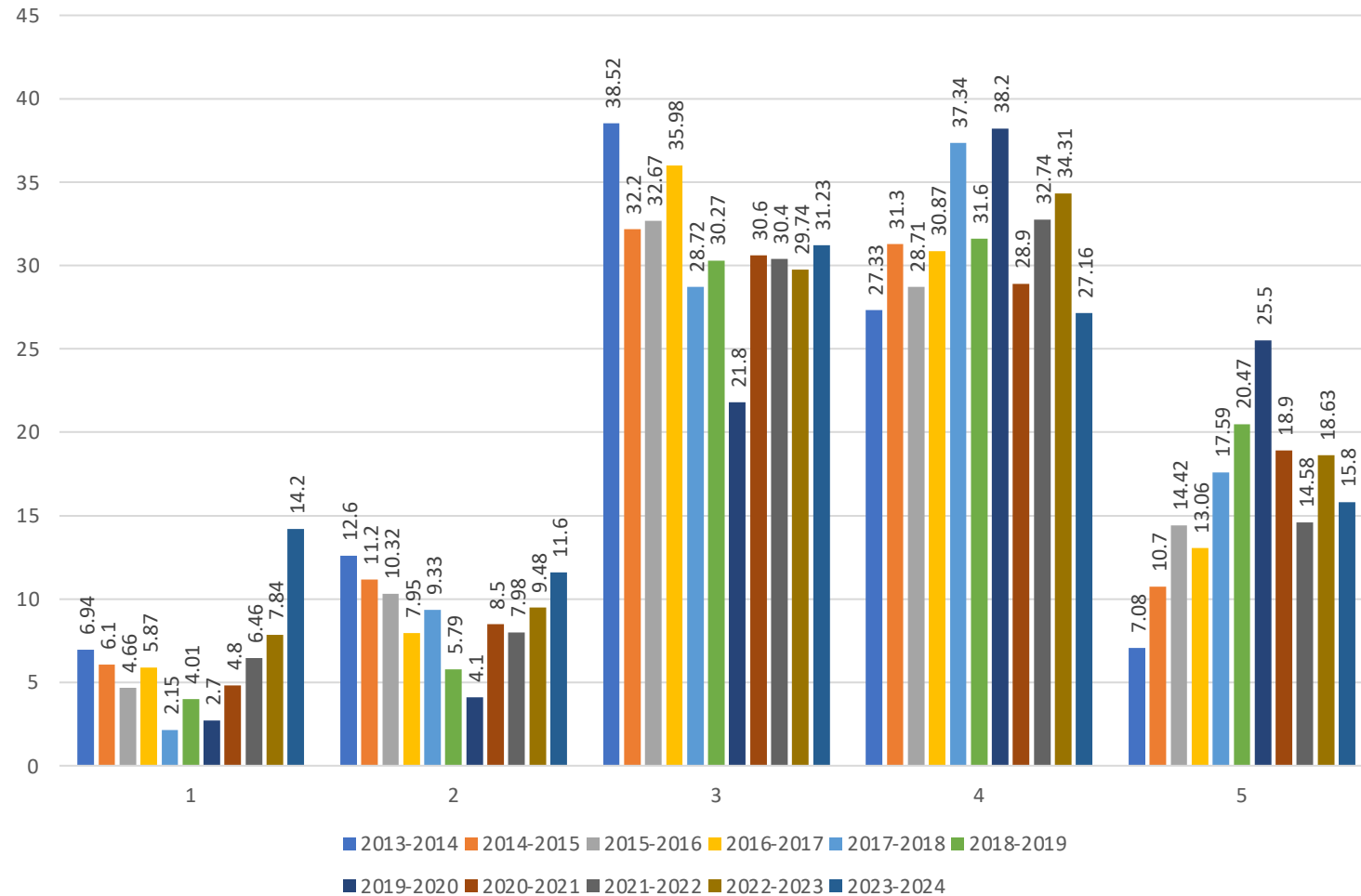


ANNUAL UNIVERSITY SENATE EVALUATION OF THE PRESIDENT

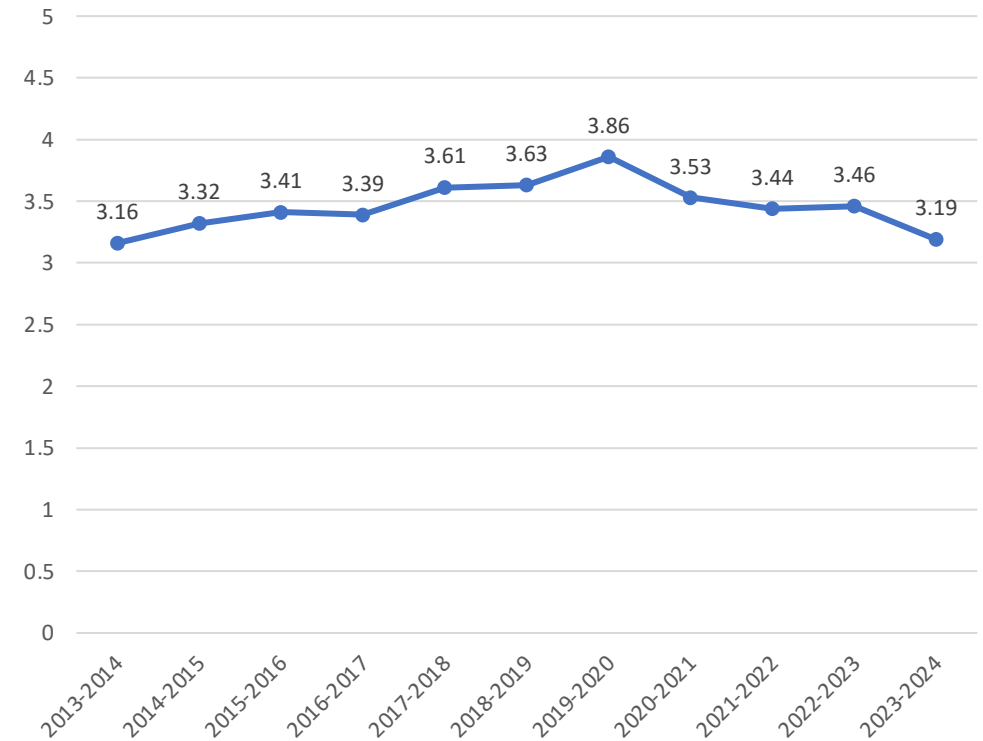
During the 2023-24 Academic Year, the President Has Been Effective in...

...Supporting professional education

Question 13



Question 13

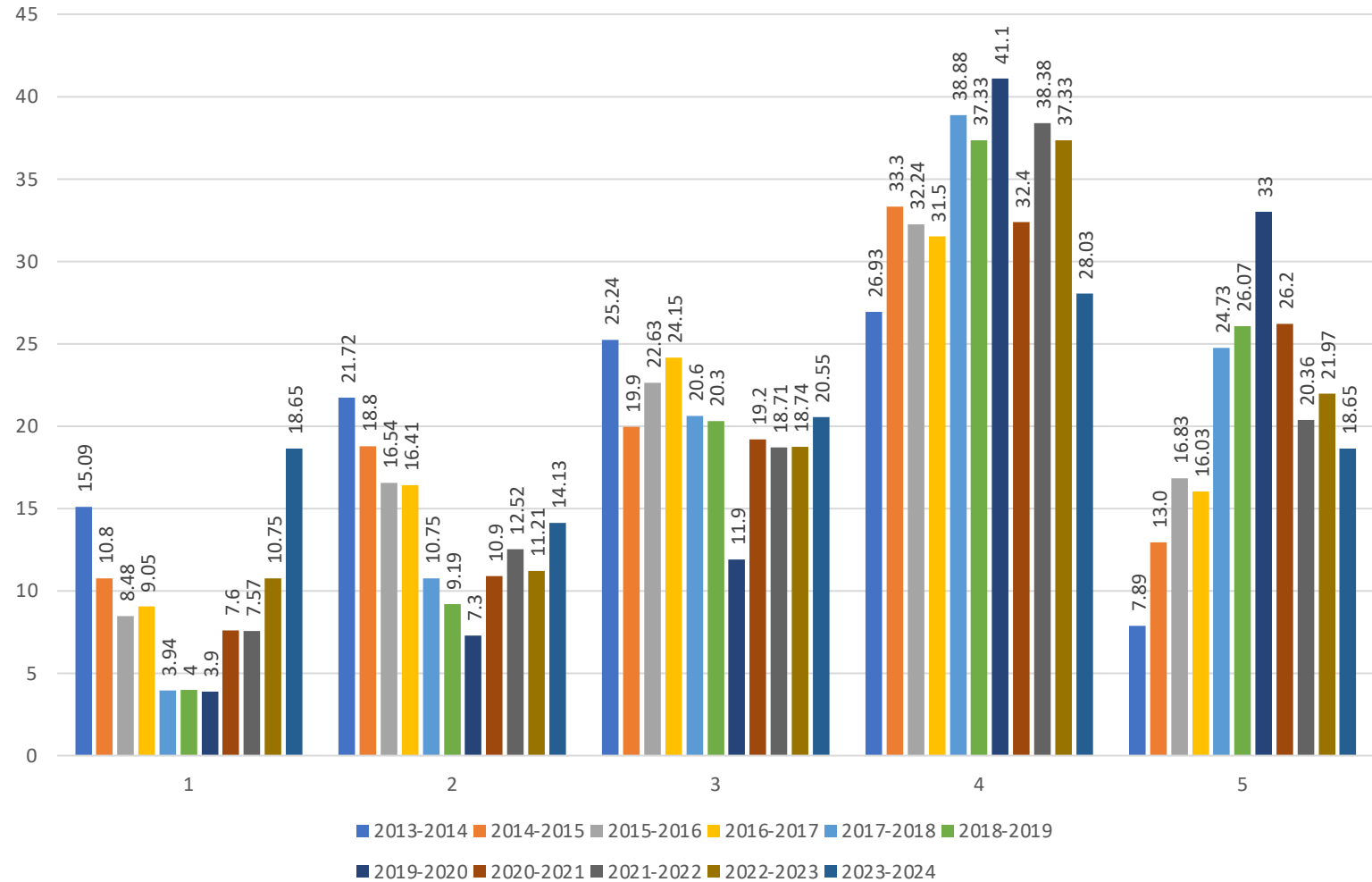


ANNUAL UNIVERSITY SENATE EVALUATION OF THE PRESIDENT

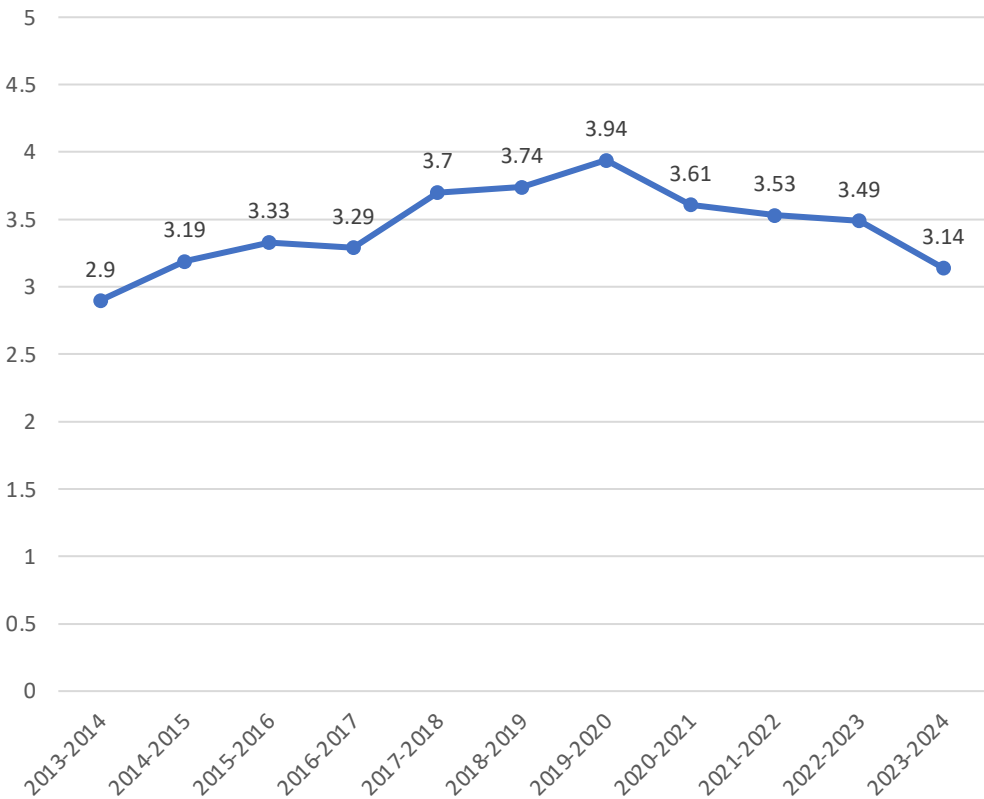
During the 2023-24 Academic Year, the President Has Been Effective in...

...Supporting the research mission

Question 14



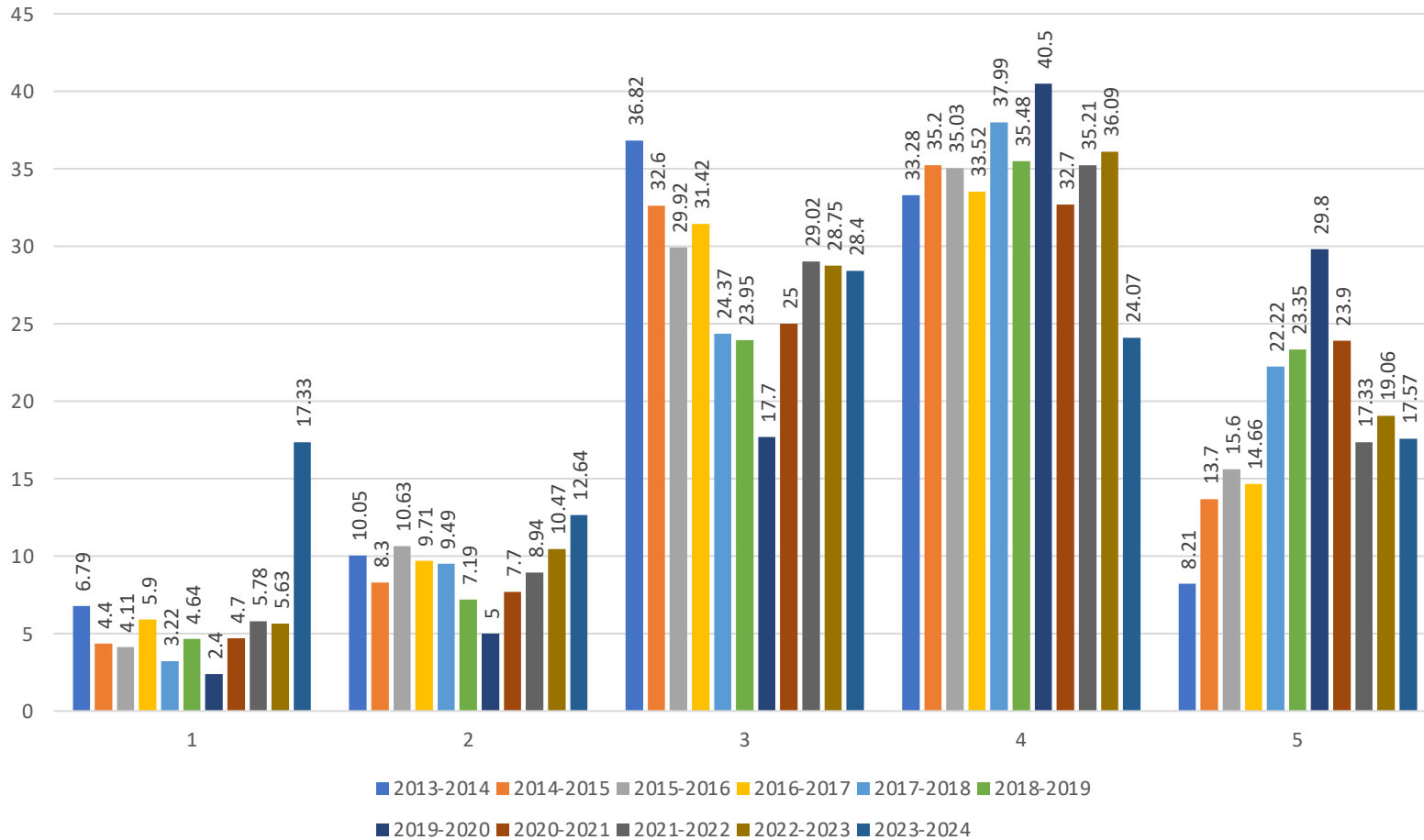
Question 14



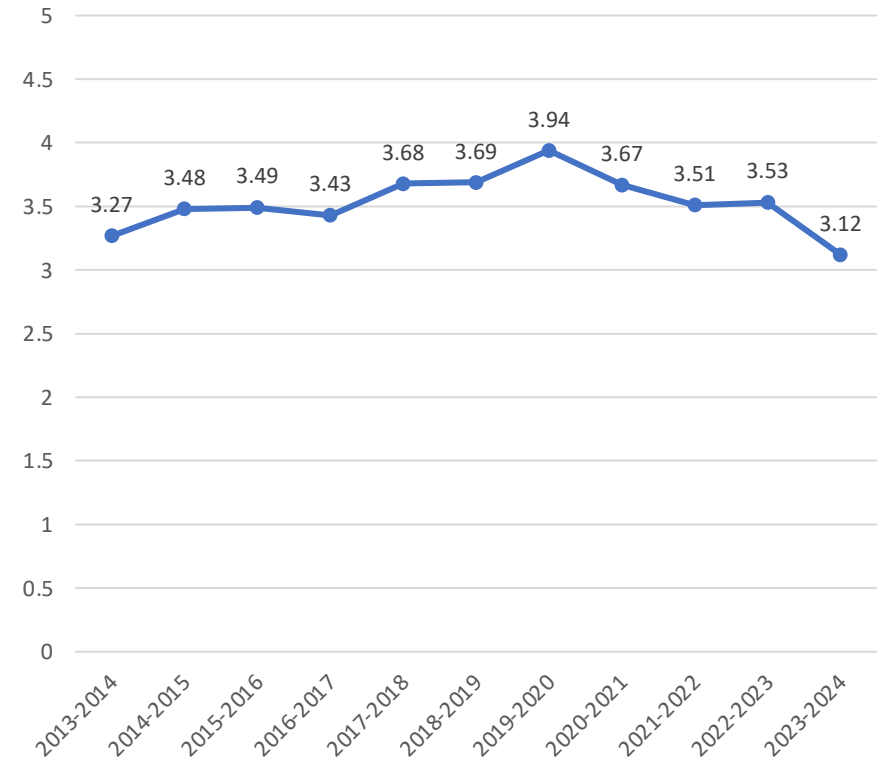
ANNUAL UNIVERSITY SENATE EVALUATION OF THE PRESIDENT

During the 2023-24 Academic Year, the President Has Been Effective in... ...Supporting the service mission

Question 15



Question 15

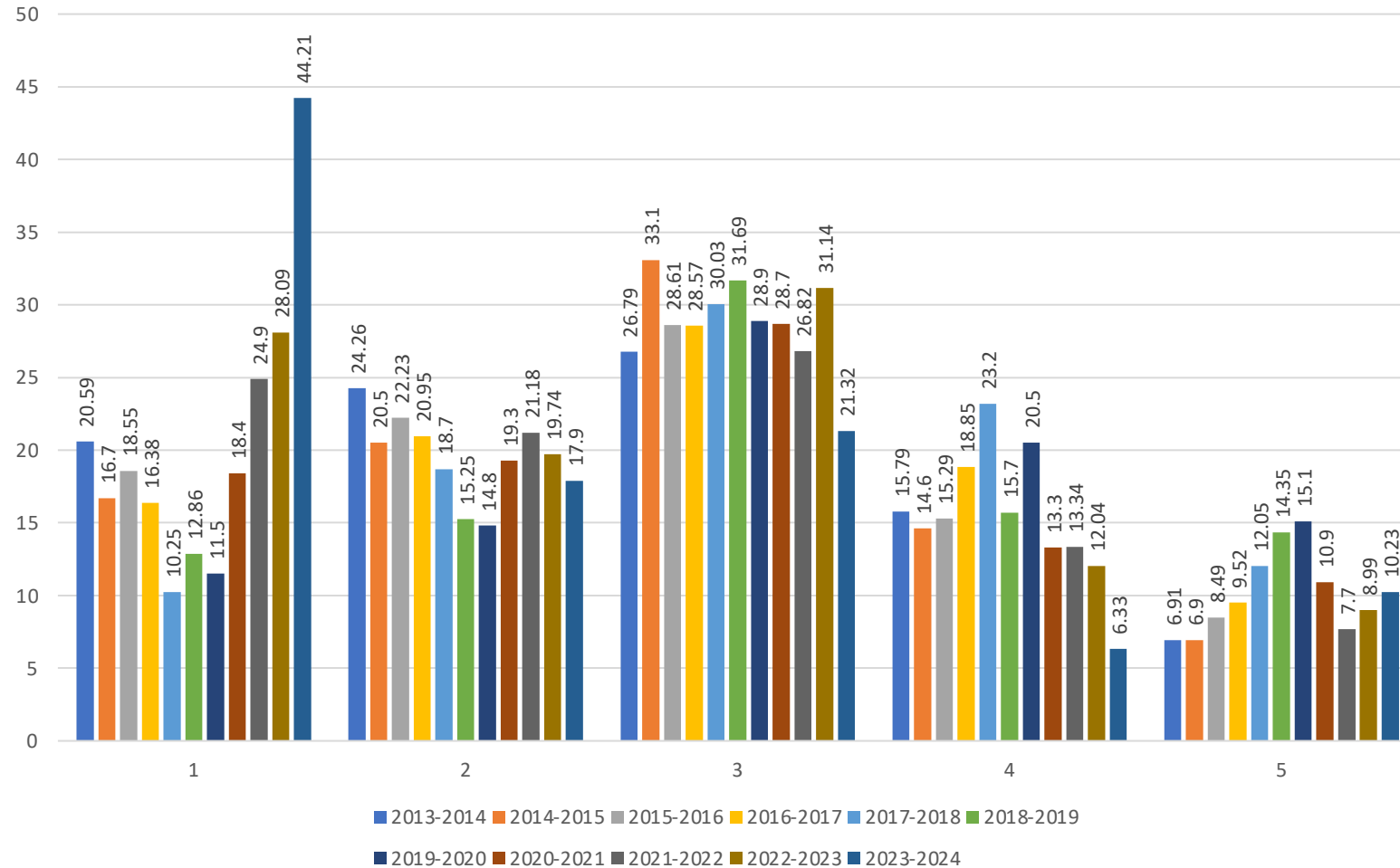


ANNUAL UNIVERSITY SENATE EVALUATION OF THE PRESIDENT

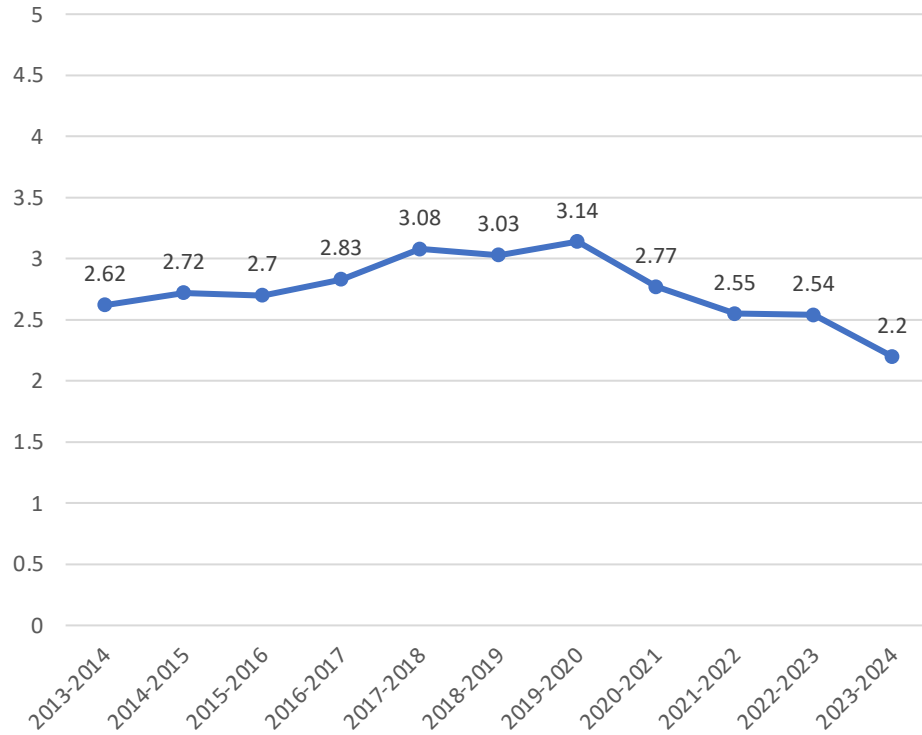
During the 2023-24 Academic Year, the President Has Been Effective in...

...Restructuring the administration to be cost effective

Question 16



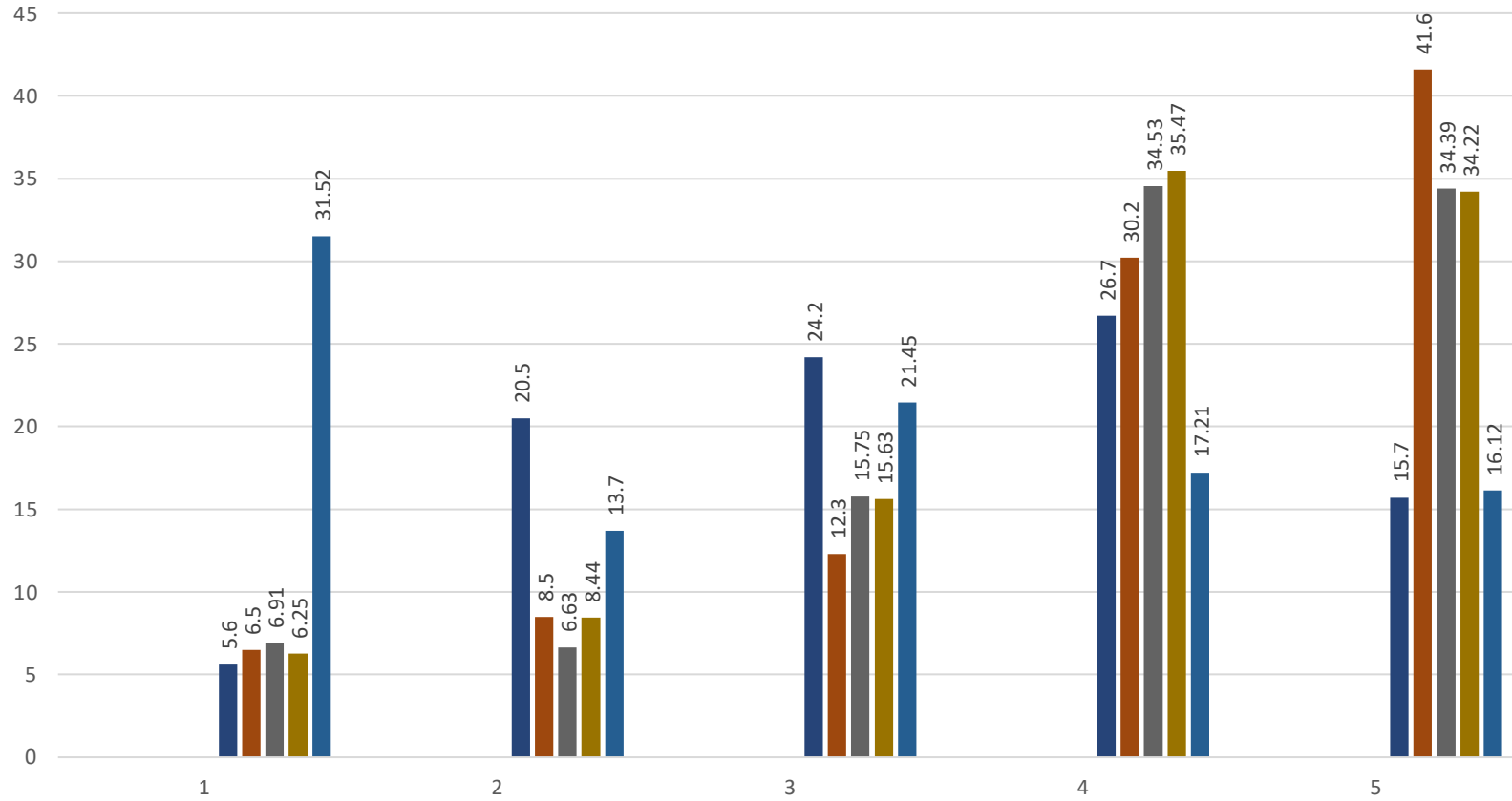
Question 16



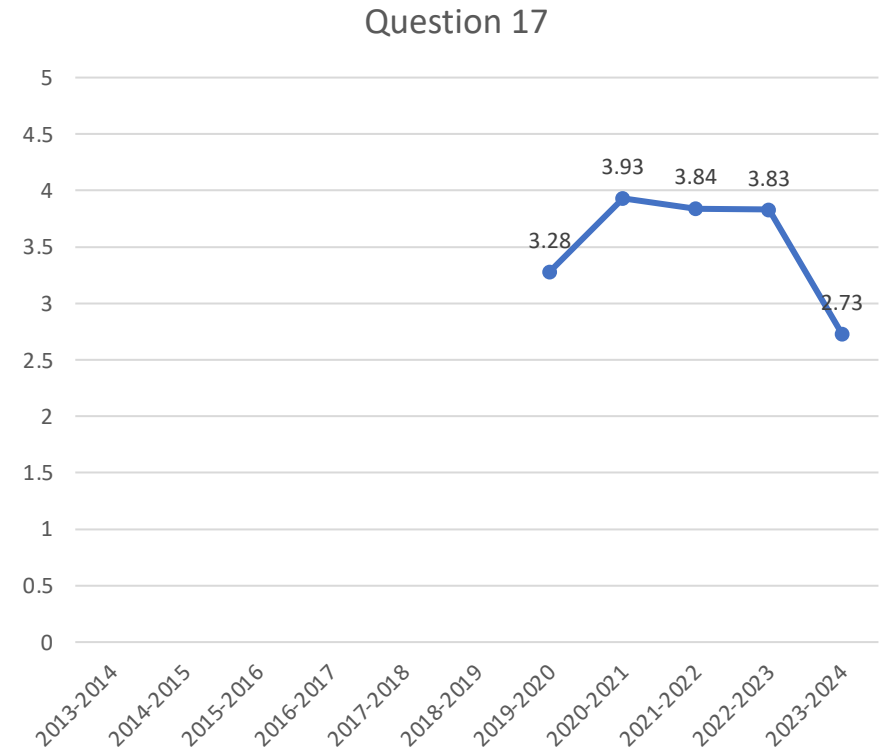
ANNUAL UNIVERSITY SENATE EVALUATION OF THE PRESIDENT

During the 2023-24 Academic Year, the President Has Been Effective in...

...Responding to unusual or crisis situations
Question 17



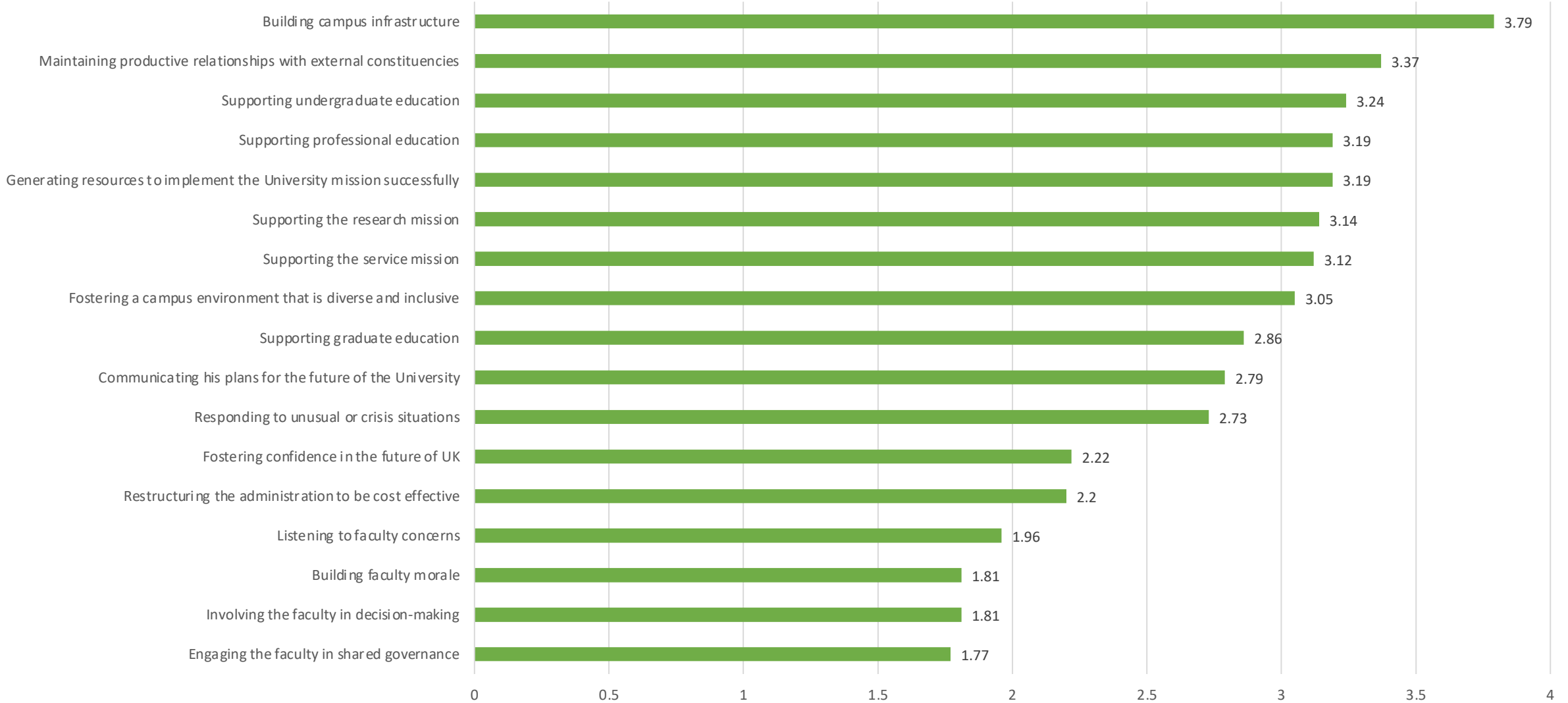
■ 2013-2014 ■ 2014-2015 ■ 2015-2016 ■ 2016-2017 ■ 2017-2018 ■ 2018-2019 ■ 2019-2020 ■ 2020-2021 ■ 2021-2022 ■ 2022-2023 ■ 2023-2024



ANNUAL SENATE COUNCIL EVALUATION OF THE PRESIDENT

During the 2023-24 Academic Year, the President Has Been Effective in...

2023-2024



*Green means it is a decrease from last year

QUESTIONS

